

ALL OUR PATTERNS CHECKED BY EXPERTS

# YOU UK Knitting



**22**  
gorgeous  
styles  
for the  
family

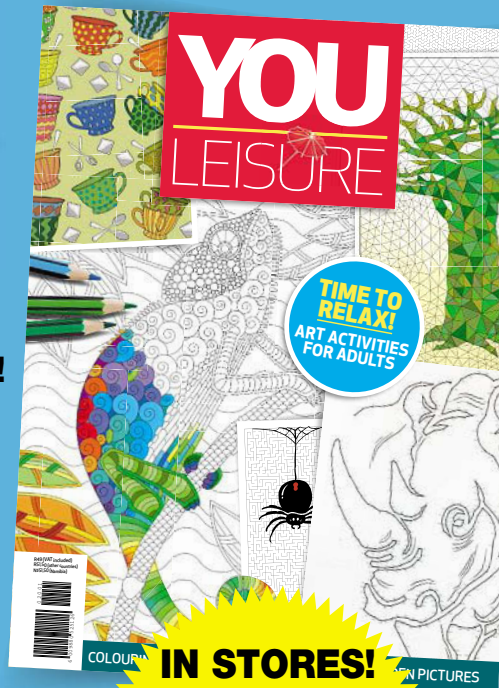
R50 (VAT INCLUDED)  
NAMIBIA N\$52,50



**JERSEYS, HOODIES,  
BLANKETS & MORE**

# SO MUCH TO ENJOY

Whether you want to unwind, exercise your mind, cook up a delicious meal or keep the kids entertained, we have the magazine for you!



**IN STORES!**  
Enjoy colouring  
in for adults  
and other fun  
activities in  
YOU Leisure.



Go to [youstore.co.za](http://youstore.co.za) and order your copy online or call Johan on 021-406-4962 to order



**A** HANDKNITTED garment is such a wonderful gift – a special knit made with love and care. We know YOU readers love to knit so we have carefully selected the patterns for this magazine and had them checked by an expert.

There's definitely something for everyone in the family. One of my favourites is the cute kid's hoodie with little ears (page 8) which my five-year-old daughter has already asked her grandmother to knit for her. But she also has her eye on the bunny jumper (page 42), which is sure to be loved by little girls. And I love the woman's hooded cardigan (page 72) – it looks so warm and comfy, I have to have it for winter! I'm also keen to try arm-knitting as it looks fun plus it's such a gorgeous snood (page 53).

We hope you enjoy this magazine and we love feedback, so email any thoughts or suggestions to [projects@you.co.za](mailto:projects@you.co.za). Be sure to tell us which pattern is your favourite and email pictures of any completed projects from this magazine so we can admire your handiwork too.

Happy knitting!

*Natalie*

#### Notes

- The abbreviations for all the patterns are on page 82 and instructions on how to block garments are on page 81.
- For best results it's essential to obtain the correct tension. The tension is indicated with each pattern. If there are too few stitches on the test swatch, use thinner needles; if there are too many stitches, use thicker needles.

ALL BOOK PRICES CORRECT AT TIME OF GOING TO PRINT AND SUBJECT TO CHANGE WITHOUT NOTICE.

# CONTENTS

## KIDS

- 4 Animal scarf and hat
- 8 Hoodie with ears
- 12 Baby cardigan
- 16 Pinafore
- 18 Sailor-style jersey
- 21 Flower jersey with frill
- 24 Appliqué cardigan
- 29 Animal mittens
- 32 Felted boots
- 36 Summer dress
- 41 Baby blanket
- 42 Bunny-pattern jumper
- 46 Snuggly bunny toy
- 50 Rugby-style jersey

## ADULTS

- 53 Arm-knitted snood
- 56 Ballerina-style wrap top
- 60 Cabled cardigan
- 66 Slouchy beanie
- 68 Daisy blanket
- 70 Hot-water bottle cover
- 72 Hooded cardigan
- 77 Round-necked sweater
- 80 How to make a pompom
- 81 Finishing touches guide
- 82 Abbreviations



## EDITORIAL TEAM

### YOU editor

Charlene Rolls

### Creative director and print brand extensions editor

Mari van der Berg

### YOU Knitting editor

Natalie Caverneis

### Copy editors

Natalie Caverneis,  
Alfie Steyn, Lola Fourie

### Knitting experts

Josie Hogben, Marié Smidt

### Designers

Mari van der Berg,  
Melanie Smook

### Illustrations

Anton Vermeulen,  
Clint Visser, Elmarie Meyer

### Picture researcher

Martinique Clayton

### Syndication

Kim Snyders

### Production

Jacques du Plooy (manager),  
Kurt Ohlson

### Reproduction

Jéan Koegelenberg

### Office manager

Vanessa Holies

## MEDIA24 LIFESTYLE

### Head of Weeklies

Minette Ferreira

### Publishing manager

Edwina Lyners

### Category manager

Armand Kasselmann

### Advertising

Wendy Clegg, [cleggy@mweb.co.za](mailto:cleggy@mweb.co.za), 083-228-9025

### Advertising coordinator

Dalena Theron

**CEO:** Media24 Esmaré Weideman

**GM:** Media24 Print Media Ishmet Davidson

**GM:** Media24 Lifestyle Raj Lalbahadur

**GM:** Advertising David Hay

## MEDIA24



PUBLISHED BY MEDIA24 LIFESTYLE

Printed by Paarl Media Cape, a division of Novus Holdings.

Distributed by On the Dot.

All rights reserved. Reproduction without written permission of the editor is strictly prohibited.

HEAD OFFICE 40 Heeregracht, Cape Town 8001 or

PO Box 6210, Roggebaai 8012. Tel 021-406-2115.

JOHANNESBURG OFFICE Media Park, 69 Kingsway Road,

Auckland Park 2092 or PO Box 786291, Sandton 2146.

Tel 011-713-9000.

Email [projects@you.co.za](mailto:projects@you.co.za). Website [you.co.za](http://you.co.za)

© MEDIA24 LIFESTYLE 2017. ALL RIGHTS RESERVED.

Enquiries about use of material 021-406-3232.

### ENQUIRIES

#### SALES

021-406-4962

[shop@you.co.za](mailto:shop@you.co.za)

#### SHOPS

[armand.kasselmann@media24.com](mailto:armand.kasselmann@media24.com)

---

# PLAYFUL SCARF & HAT SETS

*If your children tend to lose their mittens, these scarves are the perfect solution – the pockets at each end keep little fingers nice and warm. Knit matching beanies to complete the sets, which make great gifts for your favourite little ones*

---

## MEASUREMENTS

One size only, to fit

3-6 years

Cat scarf measures about

103 cm long

Pup scarf measures about

110 cm long

Hat circumference

46 cm

## MATERIALS

**Note** The scarves and hats are designed using a super-chunky yarn. Super-chunky hand-spun yarn is available at most good yarn stores. Check that the needle size on the ball band corresponds with the recommended size of the needle stated in this pattern before you buy it. If you're unable to find the yarn, use chunky yarn, working two strands together.

**For the pup set:** Choose two shades of blue in the chunky yarn, and work with one strand of each throughout to create the mottled effect.

**For the cat set:** Choose two shades of pink in the chunky yarn to create the mottled effect.

### For the cat set

- 2 x 100 g balls of super-chunky hand-spun variegated yarn in shades of red, pink and mauve (colour A)
- 1 x 100 g ball of super-chunky hand-spun yarn in dusky pink (colour B)

### For the pup set

- 2 x 100 g balls of super-chunky hand-spun variegated yarn in shades of blue, maroon and mauve (colour A)
- 1 x 100 g ball of super-chunky hand-spun yarn in dusky blue (colour B)
- 1 pair each 8 mm and 9 mm knitting needles
- 1 x 40 cm circular knitting needle, in each 8 mm and 9 mm (or use a set of 4 double-pointed needles in each size)

### For both sets

- 2 large round white buttons and 2 slightly smaller round black buttons for each scarf
- 1 oblong button or toggle for the nose for each scarf
- sewing thread in matching colour
- sewing needle and tapestry needle

## TENSION

8 sts and 11 rows to 10 cm measured over st st using 9 mm Ns.

## CAT SCARF

### Pocket

Using 9 mm Ns and colour B, c/on 14 sts.

Work 4 rows in g st.

**Dec row (RS):** k2tog, k to last 2 sts, k2tog [12 sts].

Work 2 rows in g st.

Rep the last 3 rows once more [10 sts].

Rep the dec row once more [8 sts].

Work 2 rows in g st.

Rep the dec row once more [6 sts].

Work 2 rows in g st.

Break off colour B and join in colour A.

Work 2 rows in g st.

**Inc row (RS):** k1, M1, k to last st, M1, k1 [8 sts].

Work 2 rows in g st.

Rep the inc row once more [10 sts].

Work 2 rows in g st.

Rep the inc row once more [12 sts].

Work 4 rows in g st.

Rep the inc row once more [14 sts].

Work 3 rows in g st.

**Dec row (WS):** k2tog, k to last 2 sts, k2tog [12 sts].

### Scarf

Work straight in g st on these 12 sts until the work measures 91 cm from the beg, ending with a WS row.



### Pocket

**Next row (RS):** k1, M1, k to last st, M1, k1 [14 sts].

Work 4 rows in g st.

**Dec row (WS):** k2tog, k to last 2 sts, k2tog [12 sts].

Work 2 rows in g st.

Rep the dec row once more [10 sts].

Work 2 rows in g st.

Rep the dec row once more [8 sts].

Work 2 rows in g st.

Break off colour A and join in colour B.

Work 2 rows in g st.

Rep the dec row once more [6 sts].

Work 2 rows in g st.

**Next row (WS):** k1, M1, k to last st, M1, k1 [8 sts].

Work 2 rows in g st.

Rep the last 3 rows once more [10 sts].

Rep the inc row once more [12 sts].

Work 4 rows in g st.

Rep the inc row once more [14 sts].

Work 3 rows in g st.

C/off all sts.

### Cat ears (make 4)

Using 8 mm Ns and colour B, c/on 6 sts.

Work 4 rows in g st.

**Next row:** k2tog, k4 [5 sts].

Work 1 row g st.

**Next row:** k3, k2tog [4 sts].

**Next row:** k2tog twice [2 sts].

**Next row:** K2tog and fasten off.

### TO MAKE UP

Darn in all the loose ends of yarn. You may find it easier to sew the seams using a thinner yarn in a matching colour. Fold the colour B section under colour A and stitch the sides together, leaving the c/on and c/off edge open to create the pocket.

Put a smaller button on top of a larger button to create a pupil for the eye and sew both buttons together on the pocket section (see the picture for placement). Repeat for the other eye. Now sew the oval button or toggle horizontally at the bottom of the pocket for the nose.

Using a slip stitch, attach the ears to the top of the pocket section, so that when the ears have been stitched they'll fall over the face. Make sure the ears are attached securely and darn in the ends of yarn.



### PUP SCARF

#### Pocket

Using 9 mm Ns and colour B, c/on 14 sts.

Work 4 rows in g st.

**Dec row (RS):** k2tog, k to last 2 sts, k2tog [12 sts].

Work 3 rows in g st.

Rep the last 4 rows once more [10 sts].

Rep the dec row once more [8 sts].

Work 8 rows in g st.

Rep the dec row once more [6 sts].

Work 3 rows in g st.

Break off colour B and join in colour A.

Work 3 rows in g st.

**Inc row (RS):** k1, M1, k to last st, M1, k1 [8 sts].

Work 8 rows in g st.

Rep the inc row once more [10 sts].

Work 3 rows in g st.

Rep the inc row once more [12 sts].

Work 4 rows in g st.

Rep the inc row once more [14 sts].

Work 3 rows in g st.

**Dec row (WS):** k2tog, k to last 2 sts, k2tog [12 sts].

#### Scarf

Work straight in g st on these 12 sts until the work measures 91 cm from the beg, ending with a WS row.

## Pocket

**Next row (RS):** k1, M1, k to last st, M1, k1 [14 sts].

Work 4 rows in g st.

**Dec row (WS):** k2tog, k to last 2 sts, k2tog [12 sts].

Work 3 rows in g st.

Rep the dec row once more [10 sts].

Work 8 rows in g st.

Rep the dec row once more [8 sts].

Work 3 rows in g st.

Break off colour A and join in colour B.

Work 3 rows in g st.

Rep the dec row once more [6 sts].

Work 8 rows in g st.

**Next row (RS):** k1, M1, k to last st, M1, k1 [8 sts].

Work 3 rows in g st.

Rep the last 4 rows once more [10 sts].

Rep the inc row once more [12 sts].

Work 4 rows in g st.

Rep the inc row once more [14 sts].

Work 3 rows in g st.

C/off all sts.

## Pup ears (make 4)

Using 8 mm Ns and colour B, c/on 8 sts.

Work 4 rows in g st.

**Next row:** k2tog, k6 [7 sts].

Work 3 rows in g st.

**Next row:** k4, k2tog [6 sts].

Work 2 rows in g st.

C/off rem 6 sts.

## TO MAKE UP

Work exactly as given for the cat scarf.

## HAT

**Note:** The hat is worked in rnds using a circular N or a set of 4 double-pointed Ns. If working on double-pointed Ns, distribute the sts evenly across the required Ns. Using 8 mm circular N and colour B, c/on 36 sts.

Mark the end of the rnd with a coloured marker to denote the beg of next rnd.

**1st rnd:** [k2, p2] 4 times, k2, place a marker on N to denote centre of rnd, p2, [k2, p2] 4 times.

Cont in k2, p2 rib patt for 7 more rnds, placing the marker in the centre of rnd as before.



Break off colour B and join in colour A.

Change to 9 mm circular N and work in st st (every rnd k) for 3 rnds.

**Next rnd:** \*k2tog, k to marker, slide marker onto N; k2tog, k to end of rnd [34 sts].

**Next rnd:** k.

Rep the last 2 rnds 3 times more [28 sts].

**Next rnd:** \*k2tog, k5; rep from \* to end [24 sts].

K 1 rnd.

**Next rnd:** \*k2tog, k4; rep from \* to end [20 sts].

K 1 rnd.

**Next rnd:** \*k2tog, k3; rep from \* to end [16 sts].

K 1 rnd.

**Next rnd:** \*k2tog, k2; rep from \* to end [12 sts].

K 1 rnd.

**Next rnd:** \*k2tog, k1; rep from \* to end [8 sts].

Break off yarn, thread end through rem sts and fasten off.

Darn in all the loose ends of yarn at the back of the work.



FROM SOFT + SIMPLE KNITS  
FOR LITTLE ONES, BY HEIDI BOYD,  
PUBLISHED BY NORTH LIGHT BOOKS  
(R315, TAKEALOT.COM)

---

# CHEEKY HOODIE

*Keep your little one warm in this cuddly jacket with teddy bear ears. Sizes are from newborn to five years old*

---

## MEASUREMENTS

### To fit

0-6 months (6-12 months;

12-24 months; 2-3 years; 4-5 years)

### To fit chest

41 (46;51;56;61) cm

### Actual chest measurement

48 (54;59;63;68) cm

### Length from shoulder

30 (33;37;43;48) cm

### Sleeve length

12 (14;17;21;26) cm

## MATERIALS

**Note:** this sweater has been designed in a standard soft DK yarn

■ 4 (5;6;7;9) x 100 g balls of Stylecraft Lullaby DK in Sand (Shade 1756)

■ 1 pair each 3,25 mm and 4 mm knitting needles

■ 5 (5;6;6;7) buttons

■ Tapestry needle

## TENSION

22 sts and 31 rows to 10 cm measured over patt using 4 mm Ns.

## NOTE

Instructions are given for the smallest size with the larger sizes in brackets ( ); where one set of figures is given it applies to all sizes.

## BEFORE YOU BEGIN

This garment has been designed in five sizes. Before you begin knitting, use a pencil to circle the size you wish to make throughout.

## BACK

Using 3,25 mm Ns, c/on 62 (70;78;82;90) sts.

**1st row:** \*k2, p2; rep from \* to last 2 sts, k2.

**2nd row:** \*p2, k2; rep from \* to last 2 sts, p2.

These 2 rows form the rib patt.

Work 7 (7;7;9;9) rows more in rib.

**Next row – dec row:** p6 (4;2;4;2), p2 tog, [p4, p2 tog] 8 (10;12;12;14) times, p6 (4;2;4;2) [53 (59;65;69;75) sts].

Change to 4 mm Ns.

**1st row:** \* p1, k1; rep from \* to last st, p1.

**2nd row:** \* k1, p1; rep from \* to last st, k1.

**3rd row:** work as given for 1st row.

**4th row:** p.

**5th row:** work as given for 2nd row.

**6th row:** work as given for 1st row.

**7th row:** work as given for 2nd row.

**8th row:** p.

These 8 rows form the main patt.

Cont in patt until work measures 30 (33;37;43;48) cm from the beg, ending with a WS row.

## Shape shoulders

C/off 7 (8;9;10;11) sts in patt at the beg of next 2 rows [39 (43;47;49; 53) sts].

C/off 8 (9;10;11;11) sts in patt at the beg of next 2 rows [23 (25;27;27;31) sts].

C/off rem 23 (25;27;27;31) sts in patt.

## LEFT FRONT

Using 3,25 mm Ns, c/on 27 (31;35;35;39) sts.

**1st row:** \* k2, p2; rep from \* to last 3 sts, k2, p1.

**2nd row:** k1, p2, \* k2, p2; rep from \* to end.

These 2 rows form the rib patt.

Work 7 (7;7;9;9) rows more in rib.

**Next row – dec row:** p4 (3;2;5;3), p2 tog, [p4 (4;4;6;6), p2 tog] 3 (4;5;3;4) times, p3 (2;1;4;2) [23 (26;29;31;34) sts].  
Change to 4 mm Ns.

**1st row:** \* p1, k1; rep from \* to last 1 (0;1;1;0) sts, p1 (0;1;1;0).

**2nd row:** p0 (1;0;0;1) \* k1, p1; rep from \* to last st, k1.

**3rd row:** work as given for 1st row.

**4th row:** p.

**5th row:** \* k1, p1; rep from \* to last 1 (0;1;1;0) sts, k1 (0;1;1;0).

**6th row:** k0 (1;0;0;1), \* p1, k1; rep from \* to last st, p1.

**7th row:** work as given for 5th row.

**8th row:** p.

These 8 rows form the main patt.

Cont in patt until work measures 27 (30;34;39;44) cm from the beg, ending with a RS row.





### Shape neck

**Next row:** c/off 5(6;7;5;7) sts in patt, patt to end [18 (20;22;26;27) sts].

Work 3(3;3;2) rows, dec 1 st at neck edge in every row [15 (17;19; 24;25) sts].

**For 4th & 5th sizes only:** Work 5 rows, dec 1 st at neck edge in next and every foll alt row [21 (22) sts].

**For all sizes:** Cont without shaping until work measures 30 (33;37;43;48) cm from the beg., ending with a WS row.

### Shape shoulder

**Next row:** c/off 7 (8;9;10;11) sts in patt, patt to end [8 (9;10;11;11) sts].

**Next row:** patt.

C/off rem 8 (9;10;11;11) sts in patt.

### RIGHT FRONT

Using 3,25 mm Ns, c/on 27 (31;35;35;39) sts.

**1st row:** p1, \*k2, p2; rep from \* to last 2 sts, k2.

**2nd row:** p2, \*k2, p2; rep from \* to last st, k1.

These 2 rows form the rib patt.

Work 7 (7;7;9;9) rows more in rib.

**Next row – dec row:** p3 (2;1;4;2), p2 tog, [p4 (4;4;6;6), p2 tog] 3 (4;5;3;4) times, p4 (3;2;5;3) [23 (26;29;31;34) sts].

Change to 4 mm Ns.

**1st row:** k0 (1;0;0;1), \*p1, k1; rep from \* to last st, p1.

**2nd row:** \*k1, p1; rep from \* to last 1 (0;1;1;0) sts, k1 (0;1;1;0).

**3rd row:** work as given for 1st row.

**4th row:** p.

**5th row:** k0 (1;0;0;1), \*k1, p1; rep from \* to last st, k1.

**6th row:** \*p1, k1; rep from \* to last 1 (0;1;1;0) sts, p1 (0;1;1;0).

**7th row:** work as given for 5th row.

**8th row:** p.

These 8 rows form the main patt.

Cont in patt until work measures 27 (30;34;39;44) cm from the beg, ending with a WS row.

### Shape neck

**Next row:** c/off 5 (6;7;5;7) sts in patt, patt to end [18 (20;22;26;27) sts].

**Next row:** patt.

Work 3 (3;3;2) rows, dec 1 st at neck edge in every row [15 (17;19;24;25) sts].

**For 4th and 5th sizes only:** Work 5 rows, dec 1 st at neck edge in next and every foll alt row [21 (22) sts].

**For all sizes:** Cont without shaping until work measures 30 (33; 37;43;48) cm from the beg, ending with a RS row.

### Shape shoulder

**Next row:** c/off 7 (8;9;10;11) sts in patt, patt to end [8 (9;10;11;11) sts].

**Next row:** patt.

C/off rem 8 (9;10;11;11) sts in patt.

### SLEEVES (both alike)

Using 3,25 mm Ns, c/on 42 (42;46; 46;54) sts. Work in rib patt as given for Back for 9 (9;9;11;11) rows.

**Next row:** p2 (2;2;6;6), p2 tog [p4 (4;3;6;3), p2 tog] 6 (6;8;4;8) times, p2 (2;2;6;6) [35 (35;37;41;45) sts].

Change to 4 mm Ns.

**Work in main patt as given for Back as folls:**

Cont in patt, inc 1 st at each end of foll 3rd (3rd;5th; 5th;5th) row and every foll 4th (2nd;4th;4th;4th) row until there are 45 (41;53;47;51) sts on the Ns.

**For 2nd, 4th and 5th sizes only:** Inc 1 st at each end of every foll 4th (6th;8th) row until there are 49 (57;61) sts on the Ns.

**For all sizes:** Cont without shaping on these 45 (49;53; 57;61) sts until work measures 12 (14;17;21;26) cm from the beg, ending with a WS row.

### Shape top

C/off 3 (3;2;3;3) sts in patt at the beg of next 10 (6;2;14;18) rows [15 (31;49;15;7) sts].

**For 1st, 2nd, 3rd and 4th sizes only:** C/off 4 (4;3;4) sts at the beg of next 2 (6;14;2) rows [7 sts].

**For all sizes:** C/off rem 7 sts.

### HOOD

Using 4 mm Ns c/on 73 (75;79; 81;85) sts.

**Work in main patt as given for Back as folls:**

Cont until work measures 18 (19;20;21;22) cm from the beg, ending with a WS row.

### Shape top

**Next row:** c/off 24 (25;26;27;28) sts, patt the next 24 (24;26;26;28) sts, c/off rem 24 (25;26;27;28) sts. You will have 25 (25;27;27;29) sts on the Ns.

With the WS of work facing, rejoin yarn to rem 25 (25;27; 27;29) sts and cont in patt until work measures 11 (11,5;12; 12,5;13) cm from c/off row, ending with a WS row.

C/off these 25 (25;27;27;29) sts in patt. Join the side edges at top of hood to c/off edges at side panels of hood.

### HOOD BORDER

With the RS of work facing, using 3,25 mm Ns, pick up and

k 47 (49; 52; 54; 57) sts evenly along the right side of hood, pick up and k 26 (26; 28; 28; 30) sts from the 25 (25; 27; 27; 29) sts c/off at top of hood and pick up and k 47 (49; 52; 54; 57) sts evenly along left side of hood [120 (124; 132; 136; 144) sts].

**1st row:** k1, \* p2, k2; rep from \* to last 3 sts, p2, k1.

**2nd row:** p1, \* k2, p2; rep from \* to last 3 sts, k2, p1.

These 2 rows form the rib patt.

Work 7 (7; 7; 9; 9) rows more in rib.

C/off in rib.

### LEFT FRONT BORDER

With the RS facing, using 3, 2.5 mm Ns, pick up and k 62 (70; 78; 93; 105) sts evenly along the left front edge and pick up and k 8 (8; 8; 9; 9) sts evenly along the rib [70 (78; 86; 102; 114) sts].

Beg with a 2nd row of rib patt as given for Back, work 4 (4; 4; 5; 5) rows in rib.

**Next row – buttonhole row:** rib 4 (4; 5; 5; 5), c/off 2 sts, [rib 12 (14; 12; 15; 14), c/off 2 sts] 4 (4; 5; 5; 6) times, rib 3 (3; 3; 4; 4).

**Next row – buttonhole row:** rib, c/on 2 sts over those c/off on previous row.

Work 3 (3; 3; 4; 4) rows more in rib.

C/off in rib.

### RIGHT FRONT BORDER

With RS of work facing, using 3, 2.5 mm Ns, pick up and k 8 (8; 8; 9; 9) sts evenly along the rib and pick up and k 62 (70; 78; 93; 105) sts evenly along the right front edge [70 (78; 86; 102; 114) sts].

Work in rib as given for Left Front Border, except do not work the buttonhole rows.

C/off in rib.

### BELT

Using 4 mm Ns, c/on 10 (10; 10; 10; 14) sts. Work in rib patt as given for Back until work measures 10 (10; 11; 11; 12) cm from the beg, ending with a WS row.

C/off in rib.

Sew the belt to the centre back of Hoodie (see picture).

### EARS (make 4 pieces)

Using 4 mm Ns, c/on 12 sts.

**1st row:** k. **2nd row:** p.

Cont working in st st for 4 more rows.



Work 3 rows, dec 1 st at each end of next and foll alt row [8 sts]. Dec 1 st at each end of next row [6 sts].

C/off rem 6 sts.

Join 2 pieces together with the RS facing to make each ear, leave the lower edge open for turning. Turn through to the right side. Push a N into the top corner edges so the seam lies smoothly.

### TO MAKE UP

Join shoulder seams with a back stitch. Fold sleeves in half lengthways and, placing folds to shoulder seams, sew sleeves in position 11 (12; 13; 14; 15) cm from the shoulder seams. Placing hood borders halfway across front borders, sew hood evenly in position along neck edge, gathering in any fullness.

Join side and sleeve seams. Sew on buttons to correspond with buttonholes. Sew one ear to each corner of the hood.

Pin out hoodie to the measurements given. Cover with clean, damp tea towels and leave to dry.

See ball band for washing and further care instructions.

DESIGNED BY STYLECRAFT. FOR YOUR NEAREST STOCKIST FOR STYLECRAFT YARNS CONTACT ARTHUR BALES ON 011-888-2401, WRITE TO INFO@ARTHURBALES.CO.ZA OR VISIT STYLECRAFT-YARNS.CO.UK.



---

# PRETTY IN PINK

*The cardigan with a striking contrasting trim has been designed in six sizes. It's suitable for a moderate knitter and uses basic stitches*

---

## MEASUREMENT

### To fit

41 (46;51;56;61;66) cm

### Actual chest measurements

45 (51;55;60;65;71) cm

### Length to back neck

21 (25;29;35;39;45) cm

### Sleeve seam

15 (17;20;24;29;33) cm

## MATERIALS

**Note:** This garment has been designed in Sirdar Snuggly DK which is an imported yarn. It's a soft baby DK yarn made from nylon and acrylic. There are 165 m per 50 g ball. It's available online as well as in some yarn stores countrywide. Refer to the yarn notes below.

- 1 (2;2;3;3;4) x 50 g balls of Sirdar Snuggly DK in Pink (colour A)
- 1 x 50 g ball of Sirdar Snuggly DK in Apple Green (colour B)
- 1 pair each 3,25 mm and 4 mm knitting needles
- 1 decorative button
- Tapestry needle

### Yarn notes

If you're unable to obtain the recommended yarn for this design, you can use a soft baby DK yarn of your choice. It's advisable to make a tension square first to make sure it matches the required tension stated in the pattern before you begin knitting the cardigan.

## TENSION

22 sts and 28 rows to 10 cm measured over st st using 4 mm Ns.

## NOTE

Instructions are given for the first size with the larger sizes in ( ); where one set of figures is given it applies to all sizes.

## CARDIGAN BACK

Using 3,25 mm Ns and colour B, c/on 74 (80;88;98;104;114) sts. Work 2 (2;2;4;4;4) rows in g st.

Change to 4 mm Ns and colour A.

Starting with a k row, work in st st until work measures 4 (5;6; 7;8;10) cm from the beg, ending with a WS row.

**Next row (RS):** k2tog 12 (12;14; 16;16;18) times, k to last 24 (24;28; 32;32;36) sts, k2tog 12 (12;14;16; 16;18) times. [50 (56;60;66;72;78) sts.]

**Note:** Wind a separate small ball of colour A and B. When changing colours, twist the previous colour over the colour you're knitting next to avoid holes forming.

**Next row (WS):** join in colour B and p12 (12;14;16;16;18) sts (leave the main ball of colour A at the side). Join in the smaller ball of colour A and p26 (32;32;34;40;42) sts; join in second ball of colour B and p12 (12;14;16; 16;18) sts.

**Next row:** using colour B, p12 (12;14;16; 16;18) sts; using colour A, k26 (32;32; 34;40;42) sts; using colour B, p12 (12;14; 16;16;18) sts.

**Next row:** using colour B, p12 (12;14;16; 16;18) sts; using colour A, p26 (32;32;34;40;42) sts; using colour B, p12 (12;14;16;16;18) sts.

**Next row:** using colour B, p12 (12;14;16; 16;18) sts; using colour A, k26 (32;32; 34;40;42) sts; using colour B, p12 (12;14;16;16;18) sts.

Fasten off colour B and the extra ball of colour A as you work and cont in colour A only.

Starting with a p row, cont in st st until work measures 11 (14;17;22; 25;30) cm from beg, ending with a WS row.

## Shape armholes

Work 6 (6;6;8;8;8) rows, dec 1 st at each end of every row. [38 (44;48; 50;56;62) sts.]

Cont without shaping on these 38 (44;48;50;56;62) sts until the armholes measure 10 (11;12;13;14; 15) cm, ending with a WS row.

## Shape shoulders

C/off 5 (6;6;7;7;9) sts at the beg of the next 2 rows. [28 (32;36;36;42;44) sts.]

C/off 5 (6;7;7;8;9) sts at the beg of the next 2 rows. [18 (20;22;22;26;26) sts.]

C/off the rem 18 (20;22;22;26;26) sts.

## LEFT FRONT

Using 3,25 mm Ns and colour B, c/on 37 (40;44;49;52;57) sts.  
Work 2 (2;2;4;4;4) rows in g st.

Change to 4 mm Ns and colour A.

Starting with a k row, work in st st until work measures 4 (5;6;7;8;10) cm from the beg, ending with a WS row.

**Next row (RS):** k2tog 12 (12;14;16; 16;18) times, k13 (16;16;17;20;21) sts. [25 (28;30;33;36;39) sts.]

**Next row (WS):** using colour A, p13 (16;16;17;20;21) sts; join in colour B and p12 (12;14;16;16;18) sts.

**Next row:** using colour B, p12 (12;14;16; 16;18) sts; using colour A, k13 (16;16;17; 20;21) sts.

**Next row:** using colour A, p13 (16;16;17; 20;21) sts; using colour B, p12 (12;14;16; 16;18) sts.

**Next row:** using colour B, p12 (12;14;16; 16;18) sts; using colour A, k13 (16;16;17; 20;21) sts.

Fasten off colour B.

Using colour A only and starting with a p row, work in st st until the Left Front is 6 (4;0;0;0) rows shorter than Back to armhole.

**1st and 2nd sizes only:**

**Next row:** k to last 2 sts, k2tog (front edge). [24(27) sts.]

**Next row:** p.

Work 4 (2) rows, dec 1 st at front edge in next and foll 2nd (0) row. [22(26) sts.]

**All sizes:**

**Shape armhole**

**Next row (RS):** k2tog (armhole edge), k to last 2 (2;2;2;0;0) sts, k2tog 1 (1;1;1;0;0) time (front edge).

**Next row:** p to last 2 sts, p2tog. [19 (23;27;30;34;37) sts.]

**1st, 2nd, 3rd and 4th sizes only:**

Work 4 (4;4;6) rows, dec 1 st at armhole edge in every row and at the same time dec 1 st at the front edge in the 3rd (1st;1st;1st) and every foll 0 (2nd;2nd;2nd) row. [14 (17;21;21) sts.]

**5th and 6th sizes only:**

Work 6 rows, dec 1 st at armhole edge in every row and at the same time dec 1 st at front edge in (3rd;5th) and foll (2nd;0) row. [(26;30) sts.]

**2nd, 3rd, 4th, 5th and 6th sizes only:**

Work (2;8;6;16;16) rows, dec 1 st at front edge only in next and every foll (0;2nd;2nd;2nd;2nd) row. [(16;17;18;18;22) sts.]

**All sizes:**

Work 15 (13;13;13;9;13) rows, dec 1 st at front edge only

in 3rd (1st;1st; 1st;1st;1st) and every foll 4th row. [10 (12;13;14;15;18) sts.]

Cont without further shaping on these 10 (12;13;14;15;18) sts until the armhole measures 10 (11;12;13; 14;15) cm, ending with a WS row.

**Shape shoulder**

**Next row:** c/off 5 (6;6;7;7;9) sts, k to end. [5(6;7;7;8;9) sts.]

**Next row:** p.

C/off rem 5 (6;7;7;8;9) sts.

## RIGHT FRONT

Using 3,25 mm Ns and colour B, c/on 37 (40;44;49;52;57) sts.

Work 2 (2;2;4;4;4) rows in g st.

Change to 4 mm Ns and colour A.

Starting with a k row, work in st st until work measures 4 (5;6;7; 8;10) cm from the beg, ending with a WS row.

**Next row (RS):** k13 (16;16;17;20;21) sts, k2tog 12 (12;14;16;16;18) times. [25 (28;30;33;36;39) sts.]

**Next row (WS):** join in colour B and p12 (12;14; 16;16;18) sts; using colour A, p13 (16;16;17;20;21) sts.

**Next row:** using colour A, k13 (16;16; 17;20;21) sts; using colour B, p12 (12;14;16;16;18) sts.

**Next row:** using colour B, p12 (12;14;16; 16;18) sts; using colour A, p13 (16;16;17;20;21) sts.

**Next row:** using colour A, k13 (16;16;17;20;21) sts; using colour B, p12 (12;14;16; 16;18) sts.

Fasten off colour B.

Using colour A only and starting with a p row, cont in st st until Right Front is 6 (4;0;0;0) rows shorter than Back to armhole.

**1st and 2nd sizes only:**

**Next row:** k2tog (front edge), k to end. [24 (27) sts.]

**Next row:** p.

Work 4 (2) rows, dec 1 st at front edge in next and 2nd (0) alt row. [22 (26) sts.]

**All sizes:**

**Shape armhole**

**Next row:** k2tog 1 (1;1;1;0;0) time (front edge), k to last 2 sts, k2tog (armhole edge).

**Next row:** p2tog, p to end. [19 (23;27;30;34;37) sts.]

**1st, 2nd, 3rd and 4th sizes only:**

Work 4 (4;4;6) rows, dec 1 st at front edge in 3rd (1st;1st;1st) and every foll 0 (2nd;2nd;2nd) row and at the same time dec 1 st at armhole edge in every row. [14 (17;21;21) sts.]

### 5th and 6th sizes only:

Work 6 rows, dec 1 st at front edge in (3rd;5th) row and foll (2nd;0) row and at the same time dec 1 st at armhole edge in every row. [(26;30) sts.]

### 2nd, 3rd, 4th, 5th and 6 sizes only:

Work (2;8;6;16;16) rows, dec 1 st at front edge only in next and every (0;2;2;2) row. [(16;17;18;18;22)sts.]

### All sizes:

Work 15 (13;13;13;9;13) rows, dec 1 st at front edge only in 3rd (1st;1st;1st;1st;1st) and every foll 4th row.

[10 (12;13;14;15;18) sts.]

Cont without further shaping on these 10 (12;13;14;15;18) sts until the armhole measures 10 (11;12;13; 14;15) cm, ending with a RS row.

### Shape shoulder

**Next row:** c/off 5 (6;6;7;7;9) sts, p to end. [5(6;7;7;8;9)sts.]

**Next row:** k.

C/off rem 5 (6;7;7;8;9) sts.

### SLEEVES (both alike)

Using 3,25 mm Ns and colour B, c/on 33 (35;37;39;45;47) sts.

Work 2 (2;2;4;4;4) rows in g st.

Change to 4 mm Ns and colour A.

Starting with a k row, work in st st, inc 1 st at each end of 5th (5th;5th; 3rd;3rd;3rd) and every foll 12th (8th;8th;8th; 12th;12th) row until there are 39 (45;49;49; 49;57) sts on the Ns.

### 4th, 5th and 6th sizes only:

Inc 1 st at each end of every foll (10th;14th;14th) row. [(53;57;61) sts.]

### All sizes:

Cont without shaping on these 39 (45;49;53;57;61) sts until the sleeve measures 15 (17;20;24; 29;33) cm from the beg, ending with a WS row.

### Shape sleeve top

Work 6 (6;6;8;8;8) rows, dec 1 st at each end of every row. [27 (33; 37;37;41;45) sts.]

C/off 2 sts at beg of next 2 (2;4;4; 6;14) rows.

[23 (29;29;29;29;17) sts.]

C/off 3 sts at beg of next 6 (8;8;8;8;4) rows. [5 sts.]

C/off rem 5 sts.

### FRONT BORDER

Using a back stitch, join the shoulder seams.

With the RS facing and using 3,25 mm Ns and colour B, starting at the Right Front, pick up and k 25 (33;39;51;57;71) sts evenly along the straight edge of Left Front, pick up and k 27 (29;31;34;37;39) sts evenly along the shaped Left Front neck, pick up and k 20 (22;24;24;28;28) sts across the 18 (20;22;22;26;26) sts for the back neck, pick up and k 27 (29;31;34;37;39) sts evenly down the shaped Right Front neck, pick up and k 25 (33;39;51;57;71) sts evenly down the Right Front straight edge.

[124 (146;164;194;216;248)sts.]

Work 2 (2;2;4;4;4) rows in g st.

C/off all sts kwise.

### TO MAKE UP

Darn in all loose ends of yarn. Fold sleeves in half lengthways. Placing folds to centre shoulder seams, sew sleeves in position. Using a ladder stitch, join side and sleeve seams. Using colour B, make a small button loop. Sew on button to correspond with loop. Pin out garment to measurements given. Cover with a damp cloth and leave to dry.

© SIRDAR

---

# I LOVE MY PINNY

*What a cutie this tot is in her knitted pinafore – it's easy to make and so versatile for changing seasons*

---





## MEASUREMENTS

### To fit

0-6 (6-9; 9-12) months

### Actual measurements of garment

Chest: 48 (51;54) cm; length to shoulder:

33 (37;40) cm

## MATERIALS

- 2 (2;3) x 50 g balls Elle Family Knit DK in Charcoal 073 (colour A)
- 2 x 50 g balls Elle Family Knit DK in Claret 040 (colour B)
- 2 buttons
- 1 pair 4 mm knitting needles
- 1 stitch holder
- 1 x 4 mm crochet hook (for edging)

## TENSION

22 sts and 32 rows = 10 cm over stocking stitch using 4 mm needles.

## NOTE

The instructions are given for the smallest size, with the larger sizes in brackets; where only one figure is given it applies to all sizes.

## BACK

Using 4 mm needles and B, c/on 109 (117;121) sts and k 4 rows. Change to A and work 8 (12; 12) rows st st. Cont as follows: **1st row:** Using B, k1, \*sl1pw, k1, rep from \* to end. **2nd row:** k1, \*yfwd, sl1pw, yb, k1, rep from \* to end. **3rd row:** k sts in colours as set (ie if next st is in A, k using A, next st in B, k using B, making sure to cross yarn at back of work). **4th row:** k1, \*p1, k1, rep from \* to end, working sts in colours as set. **5th and 6th row:** Using A, work in st st. Rows 1-6 set the patt. Rep these 6 rows 3 times more. Cont straight in st st until work measures 20 (22;24) cm from beg, ending with a WS row. **Next row – dec row:** k1, (k2tog) to end of row [54 (58;60) sts]. Cont straight until work measures 23 (26;28) cm from beg, ending with a WS row.

## Shape armholes

C/off 3 sts at beg of next 2 rows. **Next row:** k1, SKPO, k to last 3 sts, k2tog, k1. **Next row:** p. Rep last 2 rows 3 (4;4) times more [40 (42;44) sts]\*\*. Cont straight until

work measures 30 (34;37) cm from beg, ending with a WS row.

## Shape neck

K13 (13;14) sts and leave these sts on the holder, c/off centre 14 (16;16) sts, then cont on rem sts for left side of work.

## Left side

P one row on WS. \*Dec 1 st at beg (neck edge) of foll 3 alt rows [10 (10;11) sts]. Cont straight for 9 cm, ending with a WS row, then c/off all sts.

## Right side

With WSF, rejoin yarn at neck edge, pick up sts from holder and work as for left side from \* to end.

## FRONT

Work as for back to \*\*. Continue straight until work measures 25 (29;32) cm from beg, ending with a WS row.

## Shape neck

K to centre 8 (10;10) sts and leave sts from right-hand needle on a holder, c/off centre 8 (10; 10) sts, then cont on rem sts for left side of work.

## Left side

P one row on WS. \*Cast off 2 sts at beg (neck edge) of foll 2 alt rows, then dec 1st at same edge of foll 2 alt rows [10 (10;11) sts]. **Next row – buttonhole row:** k4 sts, cast off 2 sts, k to end. **Next row:** p, casting on 2 sts over buttonhole. St st 2 more rows, then cast off all sts.

## Right side

With WSF, rejoin yarn at neck edge, pick up sts from holder and work as for left side from \* to end.

## TO MAKE UP

Sew side seams. Using crochet hook and B, work one row dc all around armholes, neck shaping and shoulder straps. Block garment to measurement, cover with a damp cloth and allow to dry. Sew on buttons to correspond with buttonholes.

PATTERN AND DESIGN BY SAPROTEX INTERNATIONAL



---

# SAILOR BOY

*The nautical look is always on trend. Cheerful stripes topped with bright red make this a fun winter garment for a little kid*

---

## MEASUREMENTS

### To fit

0-9 months (9-18 months; 18-24 months;  
3-4 years; 5-7 years)

### To fit chest

41-46 (46-51;51-56;56-61;61-66) cm

### Actual chest measurement

50 (55;60;65;70) cm

### Length from shoulder

28 (32;38;42;48) cm

### Sleeve length

17 (20;24;29;33) cm

## MATERIALS

**Note:** This sweater has been designed in a standard soft DK yarn

- 1 (1;1;2;2) x 100 g balls of Stylecraft Wondersoft DK in Midnight, Shade No 1332 (colour A)
- 1 x 100 g ball of Stylecraft Wondersoft DK in Vanilla, Shade No 1005 (colour B)
- 1 x 100 g ball of Stylecraft Wondersoft DK in Poppy, Shade No 1333 (colour C)
- 1 pair each 3,25 mm and 4 mm knitting needles
- 2 stitch holders
- 3 buttons
- Tapestry needle

## TENSION

22 sts and 30 rows to 10 cm measured over st st using 4 mm Ns.

## NOTE

Instructions are given for the smallest size with the larger

sizes in brackets ( ); where one set of figures is given it applies to all sizes.

## BEFORE YOU BEGIN

This garment has been designed in five sizes. Before you begin knitting, circle the size you wish to make throughout with a pencil.

## BACK

Using 3,25 mm Ns and colour A, c/on 66 (70;78;86;90) sts.

**1st row:** \*k2, p2; rep from \* to last 2 sts, k2.

**2nd row:** p2, \*k2, p2; rep from \* to end.

These 2 rows form the rib patt.

Rep these 2 rows 2 (2;3;3;3) times more, then work the 1st row again.

**Next row – dec row:** rib 2 (10;8;14;8), rib 2 tog, [rib 4 (4;4;2;4), rib 2 tog] 10 (8;10;14;12) times, rib 2 (10;8;14;8) [55 (61;67;71;77) sts].

**Change to 4 mm Ns and starting with a k row, work in st st stripe sequence as follows:**

Work 4 rows in colour A and 2 rows in colour B. These 6 rows form the stripe sequence.

Cont as set until work measures about 16 (19;24;27;32) cm from the beg, ending with the 4th row of stripe sequence.

Using colour C only, cont until work measures 21 (25;30;34;40) cm from the beg, ending with a WS row. \*\*  
Work a further 14 (14;18;18;18) rows.

## Shape neck

**Next row:** k18 (20;23;23;26) sts, turn, leaving the rem 37 (41;44; 48;51) sts on a st holder.

**Working on these 18 (20;23;23;26) sts for the first side of neck shaping, work as follows:**

Work 2 rows, dec 1 st at neck edge in every row [16 (18;21;21;24) sts].

Work 3 rows more on these sts without shaping.  
C/off these 16 (18;21;21;24) sts.

## Shape second side of neck

With the RS of work facing, working on the rem 37 (41;44;48;51) sts held on the st holder, sl the first 19 (21;21;25;25) sts onto a st holder for centre back neck, rejoin yarn to rem 18 (20;23;23;26) sts, k to end of row.

Work 2 rows, dec 1 st at neck edge in every row [16 (18;21;21;24) sts].

**Next row:** p2 (5;4;4;4), M1, [p4 (8;6;6;5), M1] 3 (1;2;2;3) times, p2 (5;5;5;5) [20 (20;24;24;28) sts].

## Shoulder edging

Change to 3,25 mm Ns and work as follows:

**1st row:** p1, \*k2, p2; rep from \* to last 3 sts, k2, p1.

**2nd row:** k1, p2, \*k2, p2; rep from \* to last st, k1.

These 2 rows form the rib patt.

Work 5 rows more in rib.

C/off in rib.

## FRONT

Work as given for Back to \*\*.

## Shape neck

**Next row:** k21 (23;26;26;29) sts, turn, leaving the rem 34 (38;41;45;48) sts on a st holder.

**Working on these 21 (23;26;26;29) sts only for the first side of neck, work as follows:**

**Next row:** p.

Work 2 rows, dec 1 st at neck edge in every row [19 (21;24;24;27) sts].

Work 5 rows, dec 1 st at neck edge in next and every foll

alt row [16 (18;21;21;24) sts].

Work 8 (8;12;12;12) rows more on these sts without shaping.

**Next row:** p2 (5;5;5;5), M1, [p4 (8;6;6;5), M1] 3 (1;2;2;3) times, p2 (5;4;4;4) [20 (20;24;24;28) sts].

## Shoulder edging

Change to 3,25 mm Ns and work as follows:

**1st row:** p1, \*k2, p2; rep from \* to last 3 sts, k2, p1.

**2nd row:** k1, p2, \*k2, p2; rep from \* to last st, k1.

These 2 rows form the rib patt.

**Next row:** rib 5 (5;6;6;8), c/off 1 st, rib 5 (5;6;6;7), c/off 1 st, rib 6 (6;8;8;9).

**Next row:** rib 7 (7;9;9;10), c/on 1 st, rib 6 (6;7;7;8), c/on 1 st, rib 5 (5;6;6;8).

Work 3 rows more in rib.

C/off in rib.

## Shape second side of neck

With the RS of work facing, working on the rem 34 (38;41;45;48) sts left on the st holder, sl the first 13 (15;15;19;19) sts onto a st holder for centre front neck, rejoin the yarn to rem 21 (23;26;26;29) sts, k to end of row.

**Next row:** p.

Work 2 rows, dec 1 st at neck edge in every row [19 (21;24;24;27) sts].

Work 5 rows dec 1 st at neck edge in next and every foll alt row [16 (18;21;21;24) sts].

Work 11 (11;15;15;15) rows more without shaping. C/off.

## **SLEEVES** (both alike)

Using 3,25 mm Ns and colour A, c/on 34 (38;38;42;46) sts.

Work 7 (7;9;9;9) rows in rib as given for Back.

**Next row:** rib 8 (6;6;8;4), rib 2tog, [rib 6 (4;4;4;4), rib 2tog] 2 (4;4;4;6) times, rib 8 (6;6;8;4) [31 (33;33;37;39) sts].

**Change to 4 mm Ns and starting with a k row, work in st st stripe sequence as folls:**

Work 4 rows in colour A and 2 rows in colour B. These 6 rows form the stripe sequence. Cont as set. At the same time inc 1 st at each end of the row on the 3rd and every foll 2nd (4th;4th;6th;6th) row until there are 35 (49;51;61;67) sts on the Ns.

**1st, 2nd and 3rd sizes only:**

Inc 1 st at each end of every foll 4th (6th;6th) row until there are 49 (53;57) sts on the Ns.

**All sizes:**

Cont on these 49 (53;57;61;67) sts without shaping until work measures about 16 (19;23;28;32) cm, ending with 4th row of stripe sequence.

Using colour C only, cont without shaping until work measures 17 (20;24;29;33) cm, from the beg, ending with a WS row.

## **Shape sleeve top**

C/off 3 (4;3;4;4) sts at the beg of next 2 (8;2;10;10) rows [43 (21;51;21;27) sts].

C/off 4 (5;4;5;4) sts at the beg of next 8 (2;10;2;4) rows [11 sts].

C/off rem 11 sts.

## **NECKBAND**

Join the right shoulder seam with a back stitch. With the RS of work facing, using 3,25 mm Ns and colour C, pick up

and k 6 sts evenly along the shoulder edging, pick up and k 16 (16;20;20;20) sts evenly down the left side of front neck, k across the 13 (15;15;19;19) sts left on a st holder for centre front neck, pick up and k 19 (19;23;23;23) sts evenly up the right side of front neck, pick up and k 5 sts evenly down the right side of back neck, k across the 19 (21;21;25;25) sts left on the st holder for centre back of neck, pick up and k 2 sts evenly up the left side of back neck and pick up and k 6 sts evenly along the shoulder edging [86 (90;98;106;106) sts].

Beg with a 2nd row of rib patt as given for Back, work 1 row in rib.

**Next row:** rib 4, c/off 1 st, rib to end.

**Next row:** rib to last 4 sts, c/on 1 st, rib 4.

Work 5 rows more in rib.

C/off in rib.

## **TO MAKE UP**

Placing the left front shoulder edging over the left back shoulder edging, sew in position at side edge. Fold sleeves in half lengthways. Placing folds to the shoulder seams, sew sleeves in position for about 12 (13;14;15;16) cm from top of shoulders. Join side and sleeve seams. Sew on buttons to correspond with buttonholes.

Pin out the sweater to the measurements given. Cover with clean, damp tea towels and leave until dry. See the ball band for washing and further care instructions.

DESIGNED BY STYLECRAFT. FOR YOUR NEAREST STOCKIST FOR STYLECRAFT YARNS CONTACT ARTHUR BALES ON 011-888-2401, WRITE TO INFO@ARTHURBALES.CO.ZA OR VISIT STYLECRAFT-YARNS.CO.UK.



---

# FLOWER CHILD

*Knit this colourful jersey for your toddler –  
it's easier than it looks*

---

## MEASUREMENTS

To fit

6-12 (12-18) months

Actual chest measurement

46 (54) cm

Length to shoulder

20,5 (23) cm

Sleeve length

12,5 (18) cm

## MATERIALS

- 1 x 50 g ball of Elle Premier Natural Cotton DK in Leaf, Shade 061 (colour A)
- 1 x 50 g ball of Elle Premier Natural Cotton DK in Blue, Shade 008 (colour B)
- 1 x 50 g ball of Elle Premier Natural Cotton DK in Rose, Shade 053 (colour C)
- 1 pair each 3,25 mm and 4 mm knitting needles
- 3 stitch holders or safety pins
- Tapestry needle
- 2 contrast-coloured buttons

## NOTES

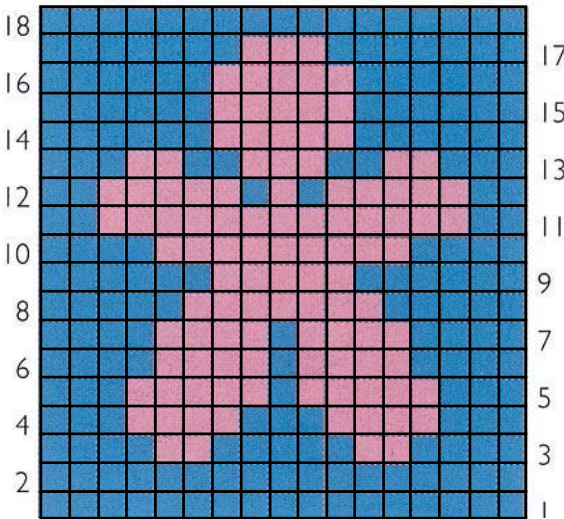
Instructions are given for the smaller size with the larger size in brackets (); where one set of figures is given it applies to both sizes.

## TENSION

22 sts and 28 rows to 10 cm measured over st st using 4 mm needles.

## TO READ THE CHART

The flower motif is given on the chart below. Every square on the chart represents a stitch. Read the chart from right to left for every RS row and from left to right for every WS row. Tick off each row after you've completed it. Use a separate ball of yarn for each colour area. Join in the colours when required and, to avoid holes forming in your work, at every colour change on every row the yarn from the previous stitch must pass over the yarn to be used for the next stitch.



## FRONT

Using 4 mm needles and colour B, c/on 123 (143) sts.

**1st row (RS):** p3, \*k7, p3; rep from \* to end.

**2nd row:** k3, \*p7, k3; rep from \* to end.

**3rd row:** p3, \*SKPO, k3, k2tog, p3; rep from \* to end. [99 (115) sts].

**4th row:** k3, \*p5, k3; rep from \* to end.

**5th row:** p3, \*SKPO, k1, k2tog, p3; rep from \* to end. [75 (87) sts].

**6th row:** k3, \*p3, k3; rep from \* to end.

**7th row:** p3, \*SK2PO, p3; rep from \* to end. [51 (59) sts].

These 7 rows form the frill.

Cut off colour B and join in colour A. Starting with a p row, work in st st for 9 (10) cm, ending with a WS row.

## Flower motif

**Next row (RS):** k17 (21) in colour A, work the next 17 sts foll the first row of chart, k17 (21) in A.

**Next row:** p17 (21) in A, work the next 17 sts foll the 2nd row of chart, p17 (21) in A.

These 2 rows set the placement of flower motif.

Cont in this way until the 18th row of the chart has been completed.

Cut off yarns B and C.

Using A only, beg with a k row and work 2 rows in st st.

## Shape neck

**Next row (RS):** k22 (25) sts and turn, leaving the rem sts on a st holder.

Working on the set of sts on the needles only, dec 1 st at neck edge on the next and every foll 4 (5) alt rows. [17 (19) sts].

Work straight on these sts until the front measures 20,5 (23) cm from the beg, ending with a WS row. C/off.

## Shape other side of neck

With the RS of work facing, sl the next 7 (9) sts onto a st holder for the centre front neck, rejoin the yarn and k to end of row.

Now dec 1 st at the neck edge on the next and every foll 4 (5) alt rows. [17 (19) sts].

Work straight on these sts until the work measures the same as the first side of neck, ending with a WS row. C/off.

## BACK

Work as given for Front, omitting the flower motif, until the back measures 12,5 (15) cm, ending with a WS row.

## Back neck opening

**Next row (RS):** k25 (29) sts and turn, leaving the rem sts on a st holder.

Work straight on these 25 (29) sts until the back measures the same as the front, ending with a p row.

C/off 17 (19) sts. Leave the rem 8 (10) sts on a st holder. Fasten off yarn.

## Shape other side of neck

With RS of work facing, rejoin the yarn to the rem 26 (30) sts and c/off 1 st, k to end. [25 (29) sts].

Work straight on these sts to match the first side of neck, ending with a WS row.

**Next row:** k8 (10), c/off 17 (19) sts.

Leave the rem 8 (10) sts on a st holder and fasten off yarn.

## SLEEVES (both alike)

Using 4 mm needles and colour B, c/on 29 (35) sts. Work 3 rows in g st.

Change to colour C and, starting with a k row, work in st st, inc 1 st at each end of row on the 3rd and every foll 4th row until there are 41 (55) sts.

Work straight on these sts until the sleeve measures 12,5 (18) cm from the beg, ending with a p row. C/off.

## NECKBAND

Darn in all the loose ends of yarn at the back of the work. Join shoulder seams.

With the RS of work facing and using 3,25 mm and colour B, start at the Back and k across the 8 (10) sts on st holder for left back neck, pick up and k 9 (11) sts down the left side of Front neck, k across the 7 (9) sts held on st holder for the centre front neck, pick up and k 9 (11) sts up right side of neck, k across the 8 (10) sts held on st holder for right back neck. [41 (51) sts].

Work 2 rows in g st. C/off.

## BUTTONHOLE BAND

With the RS of work facing, using 3,25 mm needles and colour B, pick up and k 20 sts up the left side of the back neck opening.

K 1 row.

**Next row – buttonhole row (RS):** \* k8, yon, k2tog; rep from \* once more.

K 1 row.

C/off.

## BUTTON BAND

With RS of work facing, using size 3,25 mm needles and colour B, pick up and k 20 sts down the right side of back neck opening.

Work 2 rows in g st.

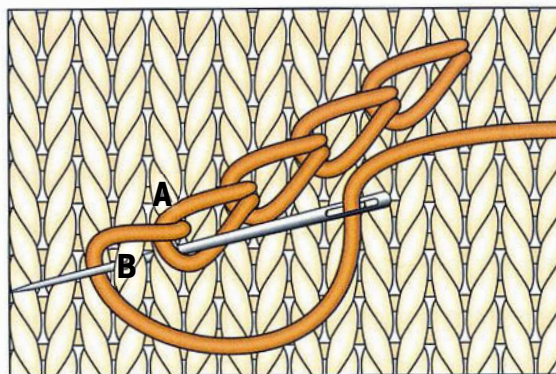
C/off.

## TO COMPLETE MOTIF

Outline the flower motif with hand-embroidered chain stitches. Thread a tapestry needle with colour A and

secure the yarn on the WS of motif. Work small, neat chain stitches (see below) around the petals of the flower. In exactly the same way, outline the centre of the flower using colour B.

**To work chain stitches:** Bring the needle out at point A (see diagram below). In one movement, push the needle down in the same place and bring it out at point B for the next stitch, looping the thread under the needle tip. Pull the needle through. This completes one stitch; continue in this way until the outline is complete. Secure the end of the yarn at the back of the work.



## TO MAKE UP

Place markers 10 (12,5) cm from the shoulder seam on armhole edges. Set in sleeves between these markers, making sure the centre of sleeve aligns with the shoulder seam. Join the side and sleeve seams. Sew on the buttons to correspond with the buttonholes.



FROM THE KNITTING AND CROCHET BIBLE,  
BY CLAIRE CROMPTON AND SUE WHITING,  
PUBLISHED BY DAVID & CHARLES (R346,  
RARU.CO.ZA)





---

# DELIGHTFUL CARDIGAN

*Knit this classic raglan cardigan for those cooler days between seasons. Add a personal touch by embellishing it afterwards with colourful crochet flowers and simple embroidery*

---

## MEASUREMENTS

### To fit ages

1-2 (2-3; 4-5; 6-7; 8-9; 10-11; 12-13) years

### To fit chest

51 (56;61;66;71;76;81) cm

### Actual chest measurement

55 (60;65;70;74;79;83) cm

### Length to back neck

29 (33;36;38;41;46;50) cm

### Sleeve seam

20 (24;29;33;37;41;42) cm

## MATERIALS

- 3 (3;4;4;5;5;6) x 50 g balls of Elle Rustica DK in Natural, Shade 001
- Oddments of Elle Pure Gold DK for the crochet flowers and embroidery. The colours used in the photograph are Salmon, Shade 205; Spritz, Shade 003; Marigold, Shade 138; Soft Lilac, Shade 200; and Sage, Shade 074
- 1 pair each 3,25 mm and 4 mm knitting needles
- 3 mm crochet hook
- 3 stitch holders
- 6 (6;7;7;8;8;8) buttons
- Tapestry needle

## TENSION

22 sts and 30 rows to 10 cm measured over st st using 4 mm Ns.

## NOTE

Instructions are given for the smallest size with the larger sizes in brackets ( ); where only one set of figures is given it applies to all sizes.

## BEFORE YOU BEGIN

This pattern has been designed in seven sizes. Before knitting, use a pencil to circle the size you're making throughout.

## BACK

Using 3,25 mm Ns, c/on 60 (66;72;78;82;86;92) sts. Starting with a k row, work in st st for 7 rows.

**Next row (WS):** k across row (this is for the foldline).

Beg with a k row, work in st st for 8 more rows.

Change to 4 mm Ns and cont straight in st st until work measures 15 (18;20;21;25;29;32) cm from the foldline, ending with a WS row.

## Shape raglan

**For 4th, 5th, 6th and 7th sizes only:**

C/off (2;3;4;3) sts at the beg of next 2 rows [(74;76;78;86) sts].

**All sizes:**

**Next row:** k1, SKPO, k to last 3 sts, k2tog, k1 [58 (64;70;72;74;76;84) sts].

**Next row:** p.

Rep the last 2 rows 16 (21;21;23;22;23;25) times more [26 (22;28;26;30;30;34) sts].

**For 1st and 3rd sizes only:**

**Next row:** k.

**Next row:** p.

**Next row:** k1, SKPO, k to last 3 sts, k2tog, k1 [24 (26) sts].

**Next row:** p.

**For 1st size only:**

Rep the last 4 rows [22 sts].

**All sizes:**

Leave the rem 22 (22;26;26;30;30;34) sts on a st holder for centre back neck.

## RIGHT FRONT

Using 3,25 mm Ns, c/on 30 (34;36;38;40;44;46) sts. Starting with a k row, work 7 rows in st st.

**Next row (WS):** k across row (this is for the foldline).

Beg with a k row, work in st st for 8 more rows.

Change to 4 mm Ns and cont straight in st st until work measures 15 (18;20;21;25;29;32) cm from the foldline, ending with a RS row for Right Front and WS row for Left Front\*.

## Shape raglan

**4th, 5th, 6th and 7th sizes only:**

**Next row (WS):** c/off (2;3;4;3) sts, p to end

[(36;37;40;43) sts].

**All sizes:**

**Next row:** k to last 3 sts, k2tog, k1 [29 (33;35;35;36;39;42) sts].

**Next row:** p.

Rep the last 2 rows 14 (15;17;17;16;17;19) times more [15 (18;18;18;20;22;23) sts].

### Shape neck

**Next row (RS):** c/off 4 (5;6;5;7;7;8) sts at the beg (neck edge), k to last 3 sts, k2tog, k1 [10 (12;11;12;14;14) sts].

**Next row:** p.

**Next row:** c/off 2 (2;2;2;2;3) sts, k to last 3 sts, k2tog, k1 [7 (9;8;9;9;10;10) sts].

**Next row:** p.

**Next row:** c/off 2 (2;2;2;2;3) sts, k to last 0 (3;3;3;3;3) sts, [k2tog] 0 (1;1;1;1;1) time, k0 (1;1;1;1;1) st [5 (6;5;6;6;6) sts].

**Next row:** p.

**Next row:** k2tog, k0 (1;0;1;1;1) st, k2tog, k1 [3 (4;3;4;4;4) sts].

**Next row:** p.

**Next row:** k2tog, k1 (0;1;0;0;0) st, [k2tog] 0 (1;0;1;1;1) time [2 sts].

**Next row:** p2tog.

Fasten off the last st on N securely.

## LEFT FRONT

Work as given for the Right Front to\*.

### Shape raglan

**4th, 5th, 6th and 7th sizes only:**

**Next row:** c/off (2;3;4;3) sts, k to end [(36;37;40;43) sts].

**Next row:** p.

**All sizes:**

**Next row:** k1, SKPO, k to end [29 (33;35;35;36;39;42) sts].

**Next row:** p.

Rep the last 2 rows 14 (15;17;17;16;17;19) times more, then the first of these rows once more [14 (17;17;17;19;21;22) sts].

### Shape neck

**Next row (WS):** c/off 4 (5;6;5;7;7;8) sts, p to end [10 (12;11;12;12;14;14) sts].

**Next row:** k1, SKPO, k to end [9 (11;10;11;11;13;13) sts].

**Next row:** c/off 2 (2;2;2;2;3) sts, p to end [7 (9;8;9;9;10;10) sts].

**Next row:** k7 (1;1;1;1;1) sts, [SKPO] 0 (1;1;1;1;1) time,

k to end [7 (8;7;8;8;9;9) sts].

**Next row:** c/off 2 (2;2;2;2;3) sts, p to end [5 (6;5;6;6;6) sts].

**Next row:** k1, SKPO, k to end [4 (5;4;5;5;5) sts].

**Next row:** p2tog, p to end [3 (4;3;4;4;4) sts].

**1st and 3rd sizes only:**

**Next row:** k.

**All sizes:**

Dec 1 st at the beg of next 1 (2;1;2;2;2) rows [2 sts].

**Next row:** p2tog.

Fasten off last st on N securely.

## SLEEVES (both alike)

Using 3,25 mm Ns, c/on 38 (38;42;46;46;50;50) sts. Starting with a k row, work in st st for 7 rows.

**Next row (WS):** k across row (this is for the foldline).

Beg with a k row, work in st st for 8 more rows.

Change to 4 mm Ns and cont in st st, inc 1 st at each end of every 12th (16th;12th;12th;8th;10th;8th) row 3 (3;5;6;10;10;12) times [44 (44;52;58;66;70;74) sts].

Cont straight on these sts until work measures

20 (24;29;33;37;41;42) cm from foldline, ending with a WS row.

## Shape raglans

**4th, 5th, 6th and 7th sizes only:**

C/off (2;3;4;3) sts at beg of next 2 rows

[(54;60;62;68)sts].

**All sizes:**

**Next row:** k1, SKPO, k to last 3 sts, k2tog, k1 [42 (42;50;52;58;60;66) sts].

**Next row:** p.

Rep the last 2 rows 8 (7;13;15;22;23;25) times more [26 (28;24;22;14;14;16) sts].

**1st, 2nd, 3rd and 4th sizes only:**

**Next row:** k.

**Next row:** p.

**Next row:** k1, SKPO, k to last 3 sts, k2tog, k1 [24 (26;22;20) sts].

**Next row:** p.

Rep the last 4 rows 5 (6;4;3) times more [14 sts].

**All sizes:**

Leave rem 14 (14;14;14;14;16) sts on a st holder.

## NECKBAND

Sew the raglan seams together using a ladder stitch.

With the RS facing and using 3,25 mm Ns, pick up and k 17 (17;20;20;23;23;26) sts around the right front neck,



k across the 14 (14;14;14;14;14;16) sts on st holder for sleeve, k across the 22 (22;26;26;30;30;34) sts on st holder for centre back neck, inc 1 st in the centre of these sts, k across the 14 (14;14;14;14;14;16) sts on st holder for other sleeve and pick up and k 17 (17;20;20;23;23;26) sts around the neck of left front [85 (85;95;95;105;105;119) sts].

**Next row (WS):** p1, \*k1, p1; rep from \* to end.

**Next row:** k1, \*p1, k1; rep from \* to end.

These 2 rows set the rib patt.

Rep last 2 rows twice more.

C/off all sts ribwise.

## BUTTONHOLE BAND

Fold the front hems in place along the foldline and slipstitch in position on the WS of the work.

With the RS facing and using 3,25 mm Ns, pick up and k 63 (73;81;85;93;105;115) sts evenly along the Right Front edge to the end of neckband. Note: Work through both layers of the hem, treating them as one piece.

**Next row (WS):** p1, \*k1, p1; rep from \* to end.

This row sets the rib patt.

**Next row – buttonhole row:** rib 3 (3;3;5;3;3;4) sts, \*c/off 2 sts, rib until there are 9 (11;10;10;10;12;13) sts on right hand N after buttonhole; rep from \* 4 (4;5;5;6;6) times more, c/off 2 sts, rib to end.

**Next row:** rib, c/on 2 sts over those c/off on previous row.

Work 3 more rows in rib.

C/off all sts ribwise.

## BUTTON BAND

With RS facing and using 3,25 mm Ns, pick up and k 63 (73;81;85;93;105;115) sts evenly along Left Front edge starting at the neckband end and finishing at the lower edge, working the double layers of hem as one as before.

**Next row (WS):** p1, \*k1, p1; rep from \* to end.

Work 5 more rows in rib.

C/off all sts ribwise.

## CROCHET FLOWERS (make all alike)

Work as many flowers as required in colours of your choice.

Using a 3 mm crochet hook, make 2 ch.

**1st rnd:** work 12 dc in 2nd ch from hook, pull the ring

closed. **2nd rnd:** sl st in back lp of 1st dc of previous rnd and pull through a 2 cm long lp, 1 dc in front lp of 1st dc and pull through a lp to match the length of previous lp, \* remove the end lp from hook, now working in both lps, work 1 dc in next dc and pull through a lp to match length of previous lp; rep from \* until the end of rnd. Cut yarn, leaving a long length that can be used for the embroidery section.

## TO DECORATE

Fold up and sew the sleeve and back hems in position as described for fronts. It's a good idea to embroider the garment pieces before you sew them together. Attach the crochet flowers on the fronts, sleeves and back in desired positions (see the photographs for inspiration). Using the length of yarn at end of last loop, sew the petals evenly in place. When all the flowers are stitched in position, work French knots (see instructions below) randomly around the flowers. Darn in all the loose ends of yarn when completed and cut away the excess threads.

**Note:** There will be a lot of loose ends at the back of the work from the embroidery and from sewing the crochet flowers in place. You can line the garment once the embroidery has been completed if you like.

## TO MAKE A FRENCH KNOT

**1** Bring the needle from the back of work to the front where the knot is required; wrap the yarn 3 times around the needle.

**2** Holding the yarn firmly, insert the needle point as close to where the needle was first inserted.

**3** Hold onto the yarn, begin to pull the yarn through until the knot is secure on the knitted fabric. One French knot has been made. Repeat these steps for remaining knots.

## TO MAKE UP

Sew up side and sleeve seams using a ladder stitch. Block garment to measurement, cover with a damp cloth and allow to dry. Sew on the buttons to correspond with the buttonholes.

PATTERN AND DESIGN BY SAPROTEX INTERNATIONAL

---

# ANIMAL MITTENS

*Young children will love these mittens featuring chirpy little chicks sitting happily all around the wristbands*

---

## MEASUREMENTS

### To fit

about 3-4 years

### Length

17 cm from wrist to top of mitten

## MATERIALS

- 1 x 50g ball of DK yarn in red (colour A)
- Oddments of DK yarn in blue (colour B), green (colour C) and yellow (colour D)
- 1 pair 4 mm knitting needles
- Stranded embroidery thread in black and orange
- Embroidery needle
- Tapestry needle

## NOTE

Instructions are given for one size only.

## TENSION

22 sts and 30 rows to 10 cm measured over st st using 4 mm Ns.

## BEFORE YOU BEGIN

The increases that lead up to the thumbs form a pattern so you can easily see if you've made a mistake. It's best to sew the thumb section up once it has been knitted, to make it easier to pick up the extra stitches that are needed to form the top of the mitten.

When working in Fair Isle pattern, regularly pass the yarn and twist it over the yarn not in use every second or third stitch at the back of the work to form a small loop. Try to work loosely over this section so the motifs don't pull out of shape and make sure the loops are worked at an even tension so they don't become caught on little fingers when the child puts them on.

## RIGHT MITTEN

Using 4 mm Ns and colour A, c/on 34 sts.

Work 4 rows in g st. Fasten off colour A.

**5th row (RS):** join in colour B, k.

**6th row:** p.

**Start the Fair Isle chick motif (see chart on page 31):**

**7th row:** join in colour D, k 4B, (2D, 6B) 3 times, 2D, 4B.

**8th row:** p 3B, (4D, 4B) 3 times, 4D, 3B.

**9th row:** k 2B, (6D, 2B) 3 times, 6D, 2B.

**10th row:** p 2B, (6D, 2B) 3 times, 6D, 2B.

**11th row:** k 3B, (4D, 4B) 3 times, 4D, 3B.

**12th row:** p 4B, (2D, 6B) 3 times, 2D, 4B.

Fasten off colour D.

**13th row:** k, using colour B.

**14th row:** p.

Fasten off colour B.

**Start shaping thumb:**

**15th row:** join in colour C, k17, kfb, kfb, k15 [36 sts].

**16th row:** p.

**17th row:** k.

**18th row:** p.

Fasten off colour C.

**19th row:** join in colour A, k17, kfb, k2, kfb, k15 [38 sts].

**20th row:** p.

**21st row:** k.

**22nd row:** p.

**23rd row:** k17, kfb, k4, kfb, k15 [40 sts].

**24th row:** p.

**25th row:** k.

**26th row:** p.

**27th row:** k17, kfb, k6, kfb, k15 [42 sts].

**28th row:** p.

**29th row:** k.

**30th row:** p.

**31st row:** k27, turn.

## Thumb

**Next row:** kfb, p across the next 9 sts, kfb, turn [13 sts].

Working on these 13 sts only and, starting with a k row, work in st st for 8 rows.

**Next row:** \*k1, k2tog; rep from \* to last st, k1 [9 sts].

Cut yarn, but keep long enough to thread the end through the sts. Pull up tightly. Join the thumb seam.

## Body of mitten

With the RS of work facing, rejoin the yarn (colour A) at the start of the thumb.

Cont with the 31st row, pick up and k 2 sts from the base



of thumb, k the rem 15 sts [33 sts].

**32nd row:** p.

Starting with a k row, work in st st for 18 rows on these 33 sts.

**51st row:** k1 \*k2tog; rep from \* to end [17 sts].

**52nd row:** p.

**53rd row:** k1, \*k2tog; rep from \* to end [9 sts].

Cut yarn, thread the end through the rem 9 sts and pull up tightly.

### LEFT MITTEN

Work as given for the Right Mitten until the 14th row has been completed.

**15th row:** join in colour C, k14, kfb, kfb, k18 [36 sts].

**16th row:** p.

**17th row:** k.

**18th row:** p.

Fasten off colour C.

**19th row:** join in colour A, k14, kfb, k2, kfb, k18 [38 sts].

**20th row:** p.

**21st row:** k.

**22nd row:** p.

**23rd row:** k14, kfb, k4, kfb, k18 [40 sts].

**24th row:** p.

**25th row:** k.

**26th row:** p.

**27th row:** k14, kfb, k6, kfb, k18 [42 sts].

**28th row:** p.

**29th row:** k.

**30th row:** p.

**31st row:** k24, turn.

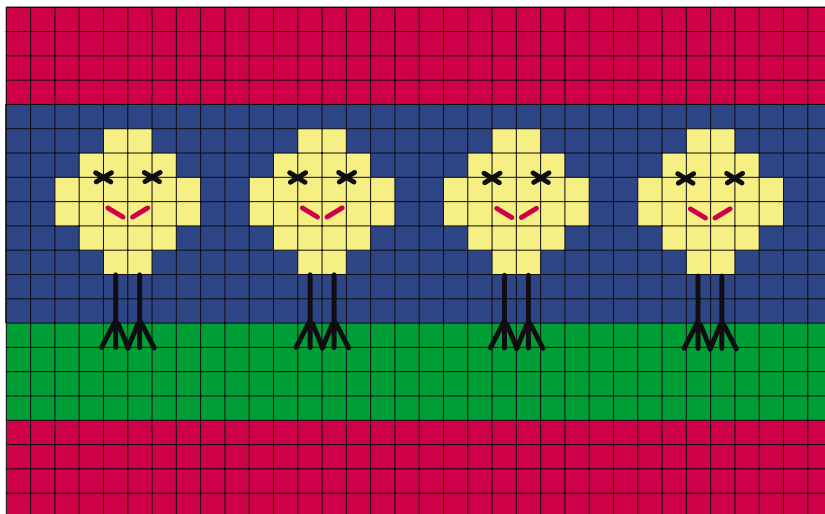
### Thumb

**Next row:** kfb, p across the next 9 sts, kfb, turn [13 sts].

Working on these 13 sts only and starting with a k row, work in st st for 8 rows.

**Next row:** \*k1, k2tog; rep from \* to last st, k1 [9 sts].

Cut yarn, but keep long enough to thread the end through the sts. Pull up tightly. Join the thumb seam.



### Body of mitten

With the RS of work facing, rejoin the yarn (colour A) at the start of the thumb.

Cont with the 31st row, pick up and k 2 sts from the base of thumb, k the rem 18 sts [33 sts].

Now cont working the mitten as given for the Right Mitten to the end.

### TO MAKE UP

Darn in all loose ends of yarn at the back of the work.

Using a ladder stitch, join the seam from the top of the mitten to the wrist. Refer to the chart above and, using three strands of embroidery thread and working with the embroidery needle, work a "V" shape for each chick's beak with the orange thread, work French knots (see page 28 for instructions) in black thread for the eyes and finally complete the legs and feet, working in small, neat back stitches in black thread. Darn in all loose ends of embroidery thread to secure.

**TIP** To stop mittens being lost, work two lengths of crochet chain stitch in colour A. Join an end of a chain to a mitten and thread through the sleeves of the child's jacket.



© THE KNITTERS' BIBLE BABY KNITS, BY LAURA LONG, PUBLISHED BY DAVID AND CHARLES (R345, RARU.CO.ZA)

---

# FELTED BOOTS

*These funky little boots for young girls are great for slipping on in the morning when the weather turns cool instead of traditional slippers*

---

## MEASUREMENTS

Designed in one size only, but you can alter the length to make smaller or larger boots accordingly.

### Length

about 20 cm

### Height

about 15 cm

## MATERIALS

**Note:** The slippers have been designed using Ella Rae Classic Wool DK. This is an imported yarn and available online. The colour used in the photo is Coral, Shade 92. It knits up to a standard DK yarn so if you prefer you can use any 100% pure wool DK in a colour of your choice.

- 2 x 100 g balls of 100% pure wool DK in a colour of your choice
- 1 pair each 4,5 mm (for tension sample) and 6,5 mm knitting needles
- Coloured markers
- Cardboard templates for pompoms
- Tapestry needle

## TENSION

20 sts and 24 rows to 10 cm measured over st st using 4,5 mm Ns.

The slippers are worked using 6,5 mm Ns and two strands of yarn throughout. Before you begin, make sure your tension is the same as given above.

## SPECIAL NOTE

In the instructions for the sole it indicates where you could alter the length should you require a smaller or larger size. If you alter the length, jot down the new measurement as you will have to adjust some of the other pieces of the





boot to fit the new length; this applies when picking up the required number of stitches for the top front, side gussets and heel and back piece.

## SOLE PIECE

### Sole

**Note:** The sole is worked from heel to toe shaping. Using 6,5 mm Ns and two strands of yarn throughout, c/on 10 sts.

**1st row:** k.

**2nd row:** p.

**Next row (RS):** k1, M1, k to last st, M1, k1 [12 sts].

**Next row:** p.

Rep the last 2 rows twice more [16 sts].

Cont working straight on these 16 sts until work measures 6 cm from the beg, ending with a WS row.

**Next row (RS):** dec 1 st at each end of row [14 sts].





Now dec 1 st at each end of the foll 4th row [12 sts].  
Cont working straight on these 12 sts until work measures 12 cm from the beg, or length required, ending with a WS row.

**Next row (RS):** k1, M1, k to last st, M1, k1 [14 sts].

**Next row:** p.

Rep last 2 rows twice more [18 sts].

Cont working straight on these 18 sts until work measures 18 cm from the beg, or length required, ending with a WS row.

**Next row (RS):** dec 1 st at each end of row [16 sts].

**Next row:** p.

Rep last 2 rows 4 more times [8 sts].

Dec 1 st at each end of next 2 rows [4 sts].

C/off these 4 sts.

Place a coloured marker at the centre of the heel.

### Side strip

Using 6,5 mm Ns and two strands of yarn throughout, c/on 6 sts.

Starting with a k row, work in st st until the work measures the same as outer edge of the sole, starting from the coloured marker at heel, around the outer edges and finishing at the marker. When the strip is long enough, ending with a WS row, c/off.

Using a tapestry needle and one strand of yarn and working in neat slipstitches, sew the side strip to the sole, beg and ending at the coloured marker in the centre of the heel. You may find it easier to join the strip to the sole as you're working as it can be difficult to measure accurately. Sew the ends of the strip together where they meet at the heel, using a ladder stitch. The seam will then be on the inside of the boot. Treat the sole with its side strip as one piece (the sole piece) from now on.

### TOP FRONT PIECE

**Note:** The piece is worked from the toe shaping.

Using 6,5 mm Ns and two strands of yarn throughout, c/on 4 sts.

**1st row:** k.

**2nd row:** p.

**Next row (RS):** k1, M1, k to last st, M1, k1 [6 sts].

**Next row:** p.

Rep these 2 rows 6 more times [18 sts].

Cont working straight on these 18 sts until work measures 14 cm, or desired length, ending with a WS row.

Place a coloured marker at each end of last row.

Cont working straight on these 18 sts until work measures a further 12 cm from the marker, ending with a WS row.

**Next row (RS):** \*k2, yfwd, k2tog; rep from \* to last 2 sts, k2.

**Next row:** p.

**Next row:** k.

**Next row:** p.

C/off these 18 sts.

Using one strand of yarn and working in neat slipstitches, sew the top front piece to the appropriate section of the sole piece, beg at the toe and ending at the coloured markers at either side.

### SIDE GUSSET (make two)

With the WS facing and using 6,5 mm Ns and two strands

of yarn, pick up and k 4 sts along the side edge of the sole piece from the coloured marker on the front piece towards the back of boot.

Starting with a k row, work in st st on these 4 sts until work measures 12 cm from the beg, ending with a WS row.

**Next row (RS):** k1, yfwd, k2tog, k1.

**Next row:** p.

**Next row:** k.

**Next row:** p.

C/off.

Using one strand of yarn, sew one edge of the gusset to the front piece.

Work the other side gusset on the opposite side of the boot in the same way.

## HEEL AND BACK PIECE

With the WS facing and using 6,5 mm Ns and two strands of yarn, pick up and k 30 sts at the beg of the side gusset, along the edge of the sole piece to the other side gusset on the opposite side of the boot.

Starting with a k row, work in st st until work measures 12 cm from the beg, ending with a WS row.

**Next row (RS):** \*k2, yfwd, k2tog; rep from \* to last 2 sts, k2.

**Next row:** p.

**Next row:** k.

**Next row:** p.

C/off.

Using one strand of yarn, sew the heel and back piece in place then join to the gussets.

Now work the other boot in exactly the same way.

## FELTING

The boots need to be felted before the final trimmings are added. The finished knitted fabric will become a felted fabric which is stronger and more durable for slipper boots. It's recommended when felting that you use a top-loading washing machine. You'll need to check the progress at intervals to control shrinkage. Some newer models of front-loaders are suitable as long as they allow you to open the door during the wash cycle.

## To felt

Darn in all loose ends of yarn securely and carefully cut away any excess yarn.

Place each boot in a separate pillowcase or other suitable fabric bag. Close the ends of the pillowcase so the boot won't come out during the washing cycle.

Set the washing machine on a low-water level, normal cycle and hot water wash. Add a small amount of washing detergent and run through a full washing cycle, checking the progress of the felting at regular intervals, making sure the boot does not shrink too much. Depending on the machine used, it may be necessary to repeat the wash/rinse cycle once more to achieve the required results. The finished boot should be felted enough that no stitch definition is visible on either side.

## To dry

Once the boots are felted, it may be necessary to stretch the pieces into shape to fit the required size. Pull and stretch the boot to shape all the way around – it's quite easy to manipulate the fabric when it's still damp. A hot iron can be used to get rid of unwanted creases or to manipulate the shape of the boot. Air-dry the boots thoroughly.

## FINISHING TOUCHES

Make two lengths of braided cord about 30 cm long, thread the cords through the eyelets along the top of the boots, beginning and ending at the centre front. Make four small pompoms (see page 80 for instructions). Securely attach a pompon to each end of the cords to complete.



FROM KNITTING AT HOME BY  
LEANNE PROUSE. DESIGN AND PATTERN  
INSTRUCTIONS © BY LEANNE PROUSE;  
PHOTOGRAPHY BY ACORN PHOTO  
© BY SIXTH&SPRING BOOKS. USED BY  
PERMISSION. (R592, RARU.CO.ZA)



# SUMMER DRESS

Combine your sewing and knitting skills to make this delightful dress. Floral fabric teams up with a knitted bodice for a new take on a classic design

## MEASUREMENTS

### To fit

3-6 (6-9; 9-12; 12-18; 18-24) months

### Finished chest measurement

46 (49; 52; 56; 61) cm

### Bodice length

10,5 (10,5; 12,5; 12,5; 13) cm

## MATERIALS

**Note:** The bodice has been designed using Debbie Bliss Eco Baby yarn. This is an imported yarn and is a soft cotton 4-ply. The colour used in the picture is Duck Egg, Shade 08 and it's available online. But you could use any soft 4-ply cotton of your choice or a baby 4-ply yarn of your choice. Elle Pure Gold Baby 4-ply, available in 100 g balls, and African Expressions Soul, in 50 g balls, would both be suitable options.

- 2 (2; 3; 3; 3) x 50 g balls of soft baby 4-ply in colour of your choice
- 1 pair 3 mm knitting needles
- Cable needle
- 3 (3; 4; 4; 4) small buttons
- 3 stitch holders
- Tapestry needle
- 50 x 140 cm floral print cotton fabric
- Sewing thread in matching colour

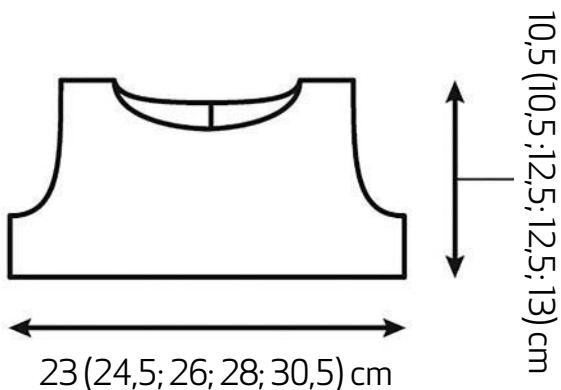
**TIP** Choose the floral print fabric first. Pick out one of the colours from the print and match the yarn to that shade.

## TENSION

25 sts and 43 rows to 10 cm measured over moss st patt using 3 mm Ns.

## NOTE

Instructions are given for the smallest size with the larger sizes in brackets ( ); where only one set of figures is given it applies to all sizes.



## BODICE FRONT

Using 3 mm Ns, c/on 67 (71; 75; 79; 85) sts.

**1st row (WS):** [p1, k1] 5 (6; 6; 7; 7) times, k1, p4, k1, [k1, p1] 4 (4; 5; 5; 6) times, k2, p4, k1, [k1, p1] 2 (2; 2; 2; 3) times, k2, p4, k1, [k1, p1] 4 (4; 5; 5; 6) times, k2, p4, k1, [k1, p1] 5 (6; 6; 7; 7) times.

**2nd row (RS):** [p1, k1] 5 (6; 6; 7; 7) times, p1, C4B, [p1, k1] 5 (5; 6; 6; 7) times, p1, C4B, p1, [k1, p1] 3 (3; 3; 3; 4) times, C4F, [p1, k1] 5 (5; 6; 6; 7) times, p1, C4F, p1, [k1, p1] 5 (6; 6; 7; 7) times.

**3rd row:** work as given for 1st row.

**4th row:** [p1, k1] 5 (6; 6; 7; 7) times, p1, k4, [p1, k1] 5 (5; 6; 6; 7) times, p1, k4, p1, [k1, p1] 3 (3; 3; 3; 4) times, k4, [p1, k1] 5 (5; 6; 6; 7) times, p1, k4, p1, [k1, p1] 5 (6; 6; 7; 7) times.

These 4 rows set the moss st patt and the cable placements.

Rep these 4 rows 2 (2; 3; 3; 3) more times.

Work 1 more row in patt; you should end with a WS row.

## Shape armholes

Cont in patt as set, c/off 4 (4; 4; 5; 5) sts at the beg of next 2 rows [59 (63; 67; 69; 75) sts].

Dec 1 st at each end of the next 3 (3; 3; 5; 5) rows [53 (57; 61; 59; 65) sts].

Patt 1 row on these sts.

Dec 1 st at each end of next row [51 (55; 59; 57; 63) sts].

Rep the last 2 rows 0 (1; 1; 0; 0) times [51 (53; 57; 57; 63) sts].

Patt 13 rows on these sts, ending with a WS row.

## Shape neck

**Next row (RS):** patt 18 (19;21;21;23) sts, turn and cont on this set of sts only; leave the rem sts on a spare N. C/off 2 (2;2;3;3) sts at the beg of next row (neck edge) [16 (17;19;18;20) sts].

Patt 1 row.

C/off 2 sts at the beg of next and foll 1 (0;1;1;1) WS row [12 (15;15;14;16) sts].

Patt 1 row.

Dec 1 st at neck edge on next and foll 1 (2;2;1;3) WS rows [10 (12;12;12;12) sts].

Patt 3 (3;3;5;3) rows straight on these sts.

C/off these 10 (12;12;12;12) sts for shoulder.

## Shape second side of neck

With the RS of work facing, sl the next 15 (15;15;15;17) sts onto a st holder for centre front, rejoin yarn to rem sts and c/off 2 (2;2;3;3) sts, patt to end [16 (17;19;18;20) sts].

Patt 1 row.

C/off 2 sts at the beg of next and foll 1 (0;1;1;1) RS rows [12 (15;15;14;16) sts].

Patt 1 row.

Dec 1 st at neck edge on next and foll 1 (2;2;1;3) RS rows [10 (12;12;12;12) sts].

Patt 4 (4;4;6;4) rows straight on these sts.

C/off these 10 (12;12;12;12) sts for shoulder.

## RIGHT BACK

Using 3 mm Ns, c/on 35 (37;39;41;45) sts.

**1st row (WS):** [p1, k1] 2 (2;2;2;3) times, k1, p4, k1, [k1, p1] 4 (4;5;5;6) times, k2, p4, k1, [k1, p1] 5 (6;6;7;7) times.

**2nd row (RS):** [p1, k1] 5 (6;6;7;7) times, p1, C4B, [p1, k1] 5 (5;6;6;7) times, p1, C4B, p1, [k1, p1] 2 (2;2;2;3) times.

**3rd row:** work as given for 1st row.

**4th row:** [p1, k1] 5 (6;6;7;7) times, p1, k4, [p1, k1] 5 (5;6;6;7) times, p1, k4, p1, [k1, p1] 2 (2;2;2;3) times.

These 4 rows set the moss st patt and the cable placements.

Rep these 4 rows 2 (2;3;3;3) more times.

Work 1 more row in patt; you should end with a WS row.

## Shape armholes

Cont in patt as set, c/off 4 (4;4;5;5) sts at the beg of next row, patt to end [31 (33;35;36;40) sts].

Dec 1 st at armhole edge on next 3 (3;3;5;5) rows [28 (30;32;31;35) sts].

Patt 1 row.

Dec 1 st at armhole edge on next row [27 (29;31;30;34) sts]. Rep the last 2 rows 0 (1;1;0;0) times [27 (28;30;30;34) sts]. Patt 22 (22;24;24;26) rows straight on these sts, ending with a WS row.

## Shape back neck

**Next row (RS):** patt 18 (20;20;20;20) sts, turn and cont on these sts only; sl rem 9 (8;10;10;14) sts onto a st holder for centre back right.

C/off 4 sts at the beg (neck edge) of next and foll WS row [10 (12;12;12;12) sts].

Patt 1 row.

C/off these 10 (12;12;12;12) sts for shoulder.

Place markers to indicate the button placements, the 1st to be worked on the 4th (4th;2nd;2nd;2nd) row, the 2nd on the 22nd (22nd;18th;18th;18th) row, the 3rd on the 40th (40th;34th;34th;34th) and the 4th on the 0 (0;48th;48th;50th) row – the last button marker applies only to the last 3 sizes.

## LEFT BACK

Using 3 mm Ns, c/on 35 (37;39;41;45) sts.

**Note:** Work buttonholes to correspond with the markers placed on the Right Back. To work a buttonhole work as follows:

**Buttonhole row:** p1, yrn, p2tog, patt to end of row.

Working buttonholes on the correct rows, work in patt as follows:

**1st row (WS):** [p1, k1] 5 (6;6;7;7) times, k1, p4, k1, [k1, p1] 4 (4;5;5;6) times, k2, p4, k1, [k1, p1] 2 (2;2;2;3) times.

**2nd row:** [p1, k1] 2 (2;2;2;3) times, p1, C4F, [p1, k1] 5 (5;6;6;7) times, p1, C4F, p1, [k1, p1] 5 (6;6;7;7) times.

**3rd row:** work as given for 1st row.

**4th row:** [p1, k1] 2 (2;2;2;3) times, p1, k4, [p1, k1] 5 (5;6;6;7) times, p1, k4, p1, [k1, p1] 5 (6;6;7;7) times.

These 4 rows set the moss st patt and the cable placements.

Rep these 4 rows 2 (2;3;3;3) more times.

Work 2 more rows in patt; you should end with a RS row.

## Shape armholes

Cont in patt as set, c/off 4 (4;4;5;5) sts at the beg of next row, patt to end [31 (33;35;36;40) sts].

Dec 1 st at armhole edge on next 3 (3;3;5;5) rows [28 (30;32;31;35) sts].

Patt 1 row.

Dec 1 st at armhole edge on next row [27 (29;31;30;34) sts]. Rep the last 2 rows 0 (1;1;0;0) times [27 (28;30;30;34) sts].



Patt 22 (22;24;24;26) rows straight on these sts, ending with a RS row.

### Shape back neck

**Next row:** patt to last 9 (8;10;10;14) sts, turn and work on this set of sts only. Sl the 9 (8;10;10;14) sts onto a st holder for centre back left.

C/off 4 sts at the beg of next and foll RS row [10 (12;12;12;12) sts].

Patt 1 row.

C/off rem 10 (12;12;12;12) sts for shoulder.

### NECK EDGING

Join the front to backs at shoulder seams using a back stitch. With the RS of work facing and using 3 mm Ns, patt across the 9 (8;10;10;14) sts that are held on st holder for centre back left, dec 1 st in the centre of the cable, pick up and k 10 sts up back neck, pick up and k 12 (12;14;14;16) sts down left front neck, patt across 15 (15;15;15;17) sts at centre front, dec 1 st in the centre of each cable, pick up and k 12 (12;14;14;16) sts up right front neck and pick up and k 10 sts down right back neck, patt across the 9 (8;10;10;14) sts held on st holder for centre back right, dec 1 st in centre of cable [73 (71;79;79;93) sts].

C/off all sts kwise on the next row.

### ARMHOLE EDGING

With the RS facing and using 3 mm Ns, pick up and k 47 (49;51;53;55) sts evenly around the armhole edge.

C/off all sts kwise on the next row.

### LOWER EDGING

Join side seams. With RS facing and using 3 mm Ns, pick up and k 1 st from every c/on st, along the lower edge of backs and front, but pick up only 3 sts across each cable patt [129 (137;145;153;167) sts].

K2 rows.

**Next row – picot c/off row (WS):** working kwise throughout, c/off 2 sts, \* sl st from right-hand N back onto left-hand N, c/on 2 sts, c/off 5 sts; rep from \* to end of row.

### TO MAKE UP

Darn in all the loose ends of yarn at the back of the work and carefully cut away the excess yarn.

Sew on the buttons to correspond with buttonholes.

### SKIRT

Fold the fabric in half, matching the selvages. Working a 1,5 cm seam allowance and using a matching coloured thread, machine-stitch the sides together, leaving the last 5 cm of the seam open at the top. Press seam open. Fold a 5 mm double hem along the top edge of skirt and stitch in place. Fold the skirt in half as before and mark the position of the fold; this foldline will be placed at the centre front bodice with the seam positioned at centre back. Now fold the skirt in half again and mark the position of these folds; they will be placed at the side seams.

Set the sewing machine on gathering stitches and work a double row of stitches at the top. Pull up the gathering threads so the skirt measures the same as the lower edge of the bodice. Match the seam to centre back and the markers to centre front and side seams, and distribute the gathers evenly.

Stitch the skirt to the bodice, sewing the skirt behind the picot edging so the edge protrudes over the skirt.

Neaten the lower edge of the skirt and trim to desired length if necessary. Fold a 5 mm double hem and press.

Top-stitch the hem in position.



FROM DESIGN IT, KNIT IT: BABIES  
BY DEBBIE BLISS. MODEL PHOTOGRAPHY  
BY PENELOPE WINCER. DESIGN AND  
PATTERN INSTRUCTIONS © BY DEBBIE  
BLISS. STILL-LIFE PHOTOGRAPHY BY  
MARCUS TULLIS © BY SIXTH&SPRING  
BOOKS. USED BY PERMISSION.  
(R311, RARU.CO.ZA)



---

# BABY BLANKIE

*Knit this soft blanket as a gift for a newborn baby – and as a personal touch embroider the baby's name and date of birth at the side*

---

## MEASUREMENTS

About 61 x 72 cm. Instructions are given for one size only.

## MATERIALS

- 3 x 100 g balls of Elle Pure Gold DK yarn in the colour of your choice
- Motifs of your choice to use for decoration
- 1 pair 4 mm knitting needles

## TENSION

22 sts and 30 rows = 10 cm over stocking stitch using 4 mm needles.

## BABY BLANKET

Using 4 mm Ns, cast on 134 sts and k 6 rows.

Cont as folls:

**1st row:** With RSF, k.

**2nd row:** k4, \*p22, k4, rep from \* to end.

**3rd to 30th row:** Rep 1st and 2nd row 14 times.

**31st to 36th row:** k.

Rows 1-36 set the patt. Rep these 36 rows 5 times more. C/off all sts.

## TO FINISH

Block blanket to measurement, cover with a damp cloth and allow to dry. Decorate as desired (see box right).

PATTERN AND DESIGN BY SAPROTEX INTERNATIONAL



## HOP, BUNNY, HOP

Decorate this cream blanket to your heart's content – but avoid small, hard items such as buttons that could come loose and be swallowed by a child.

We cut out small rabbits from felt and embroidered them onto the blanket with turquoise thread. Other easy patterns are hearts and stars. You could also embroider a simple design such as a house in the blocks. For variety use a mix of pastel and primary colours.



---

# BUNNY JUMPER

*This adorable sweater needs concentration but the girl you make it for will hop with delight*

---

## MEASUREMENTS

### To fit

3-4 (5-6; 7-8) years

### Actual chest measurements

67 (73;76) cm

### Length from shoulder

39 (41;43) cm

### Sleeve length

29 (34;38) cm

## MATERIALS

- 5 (5;6) x 50 g balls of Elle Family Knit DK in Wintersky, Shade 077 (colour A)
- 2 (2;3) x 50 g balls of Elle Family Knit DK in Aran, Shade 014 (colour B)
- 1 x 50 g ball of Elle Family Knit DK in Coral, Shade 029 (colour C)
- Remnant of DK yarn in grey for eyes and mouth detail (colour D)
- 1 pair each 3,25 mm and 4 mm knitting needles
- 2 stitch holders
- Tapestry needle

**Note:** This sweater has been designed in a standard DK yarn. You can use any DK yarn of your choice, but make sure you use the same quality of yarn throughout as some yarns are thinner than others and don't wash and wear in the same way.

## TENSION

22 sts and 30 rows to 10 cm in st st using 4 mm Ns.

## NOTE

Instructions are given for smallest size with the larger sizes in brackets ( ); where one set of figures is given it applies to all sizes.

## TO READ THE COLOUR CHART

The rabbit motif is worked following the chart on page 44. Each square on the chart represents a stitch. Read the chart from right to left for all knit (RS) rows and from left to right for all purl (WS) rows.

**Note:** The chart starts on a k row. Mark off each row as you complete it. Use separate balls of yarn for each area of colour. For the eyes, mouth and nose, use a length of yarn rather than a ball because the areas are so small. To avoid holes forming at the colour change on each row, the yarn of the last stitch must pass over the yarn to be used for the next stitch.

## BACK

Using 3,25 mm Ns and colour A, c/on 74 (80;84) sts.

**1st row:** \* k1, p1; rep from \* to end.

This row forms the rib patt.

Rep this row for a further 7 (9;9) rows.

Change to 4 mm Ns. \*\*

Starting with a k row, work in st st until work measures 27 (28;29) cm from the beg, ending with a p row.

## Shape armholes

C/off 4 sts at the beg of the next 2 rows [66 (72;76) sts].

**Next row:** k2, ssk, k to last 4 sts, k2tog, k2 [64 (70;74) sts].

Work 1 row without shaping. Rep the last 2 rows 3 times more [58 (64;68) sts].

**Next row:** k2, ssk, k to last 4 sts, k2tog, k2 [56 (62;66) sts].

Work straight on these 56 (62;66) sts until the armhole measures 12 (13;14) cm, ending with a p row.

## Shape shoulder

C/off 4 (5;5) sts at the beg of the next 6 rows [32 (32;36) sts].

Sl these 32 (32;36) sts onto a st holder for the centre back neck.

## FRONT

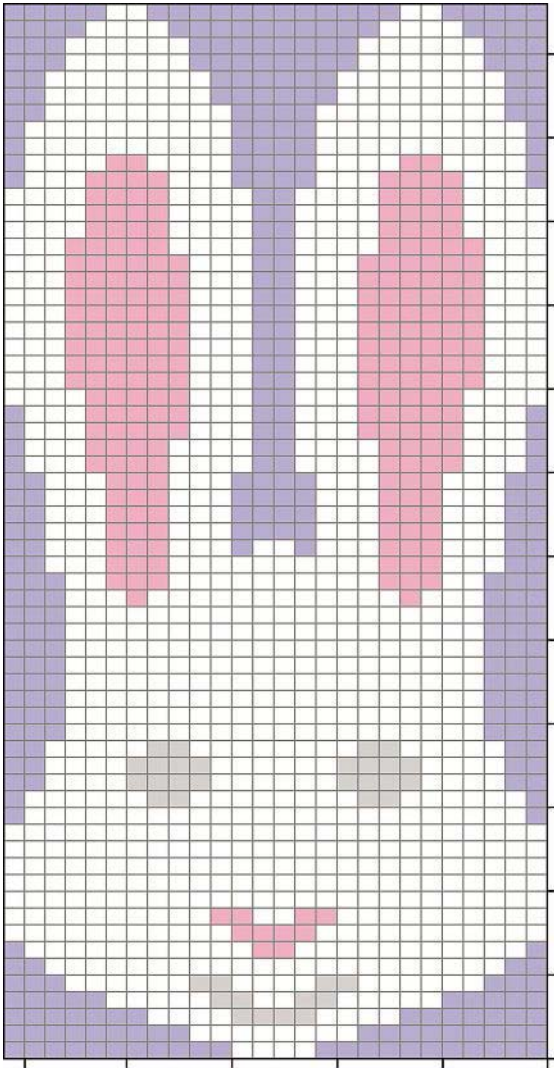
Work as given for Back to \*\*.

Starting with a k row, work in st st for 26 (26;30) rows without any shaping.

## Begin motif from chart:

**1st row:** k24 (27;29) sts in colour A, now work the next 26 sts foll the 1st row of chart, k rem 24 (27;29) sts in colour A. This row sets the position of the chart. Work rows 2-48 of chart, working st st in colour A at either side of chart as set.





### Shape armholes

Shape the armholes as given for Back, and at the same time cont working the rows of the chart.

Work straight on these rem 56 (62;66) sts until the last row of the chart has been completed.

Now work in st st and colour A only until 12 rows fewer than Back to beg of shoulder shaping has been worked.

### Shape neck

**Next row:** k21 (24;24) sts, turn, sl the rem sts onto a st holder.

Work each side of the neck separately.

**1st row:** p2, p2tog, p to end [20 (23;23) sts].

**2nd row:** k to last 4 sts, k2tog, k2 [19 (22;22) sts].  
Rep these 2 rows 3 times more [13 (16;16) sts].  
Work 1 row on these 13 (16;16) sts without shaping.  
Dec 1 st at neck edge on next row [12 (15;15) sts].  
Work 1 row on these 12 (15;15) sts without shaping.

### Shape shoulder

C/off 4 (5;5) sts at the beg of the next and foll alt row [4 (5;5) sts].

Work 1 row on these 4 (5;5) sts without shaping.

C/off these rem 4 (5;5) sts.

### Shape other side of neck and shoulders

With RSF, keep the centre 14 (14;18) sts on the st holder, then rejoin yarn to next st and k to end of row.

**Next row:** p to last 4 sts, p2tog tbl, p2 [20 (23;23) sts].

**Next row:** k2, ssk, k to end [19 (22;22) sts].

Rep these 2 rows 3 times more [13 (16;16) sts].

Work 2 rows on these 13 (16;16) sts without shaping.

Dec 1 st at neck edge on next row [12 (15;15) sts].

Work 1 row on these 12 (15;15) sts without shaping.

### Shape shoulder

C/off 4 (5;5) sts at the beg of the next and foll alt row [4 (5;5) sts].

Work 1 row on these 4 (5;5) sts without shaping.

C/off these rem 4 (5;5) sts.

### SLEEVES (both alike)

Using 3,25 mm Ns and colour A, c/on 42 (44;46) sts.

Work 10 rows in rib patt as given for Back.

Change to 4 mm Ns and, starting with a k row, work 2 rows in st st.

#### 3rd size only:

**Next row:** k2, inc 1 in next st, k to last 3 sts, inc 1 in next st, k2 [48 sts].

Work 5 rows in st st using colour A on these 48 sts.

#### All sizes:

Change to colour B. Work 2 rows in g st.

**Next row:** k2, inc 1 in next st, k to last 3 sts, inc 1 in next st, k2 [44 (46;50) sts].

Work 7 rows in st st.

**Next row:** k2, inc 1 in next st, k to last 3 sts, inc 1 in next st, k2 [46 (48;52) sts].

Work 4 rows in st st.

**Next row:** k.

Change to colour A. Work 2 rows in st st.

**Next row:** k2, inc 1 in next st, k to last 3 sts, inc 1 in next st,

k2 [48 (50;54) sts].

Work 7 rows in st st.

**Next row:** k2, inc 1 in next st, k to last 3 sts, inc 1 in next st, k2 [50 (52;56) sts].

Work 5 rows in st st.

Change to colour B. Work 2 rows in g st.

**Next row:** k2, inc 1 in next st, k to last 3 sts, inc 1 in next st, k2 [52 (54;58) sts].

Work 7 rows in st st.

**Next row:** k2, inc 1 in next st, k to last 3 sts, inc 1 in next st, k2 [54 (56;60) sts].

Work 4 rows in st st.

**Next row:** k.

Change to colour A. Work 2 rows in st st.

**Next row:** k2, inc 1 in next st, k to last 3 sts, inc 1 in next st, k2 [56 (58;62) sts].

Work 7 rows in st st.

**Next row:** k2, inc 1 in next st, k to last 3 sts, inc 1 in next st, k2 [58 (60;64) sts].

Work 5 rows in st st.

Change to colour B. Work 2 rows in g st.

**Next row:** k2, inc 1 in next st, k to last 3 sts, inc 1 in next st, k2 [60 (62;66) sts].

Work 7 rows in st st.

**Next row:** k2, inc 1 in next st, k to last 3 sts, inc 1 in next st, k2 [62 (64;68) sts].

Work 4 rows in st st.

**Next row:** k.

Change to colour A.

**2nd and 3rd sizes only:**

Work 2 rows in st st.

**Next row:** k2, inc 1 in next st, k to last 3 sts, inc 1 in next st, k2 [66;70) sts].

Work 7 rows in st st.

**Next row:** k2, inc 1 in next st, k to last 3 sts, inc 1 in next st, k2 [68;72)sts].

Work 5 rows in st st.

Change to colour B.

**3rd size only:**

Work 2 rows in g st.

Work 4 rows in st st.

## Shape sleeve top

**All sizes:**

You should have 62 (68;72) sts on the Ns before you start the sleeve top shaping.

C/off 4 sts at the beg of the next 2 rows [54 (60;64) sts].

**Next row:** k2, sl 1, k1, pssso, k to last 4 sts, k2tog, k2 [52 (58;62)sts].

Work 1 row on these 52 (58;62) sts.

**Next row:** k2, sl 1, k1, pssso, k to last 4 sts, k2tog, k2 [50 (56;60) sts].

Rep the last 2 rows twice more [46 (52;56) sts].

**Next row:** k2, sl 1, k1, pssso, k to last 4 sts, k2tog, k2 [44 (50;54)sts].

**Next row:** p2, p2tog, p to last 4 sts, p2tog tbl, p2 [42 (48;52)sts].

C/off these 42 (48;52) sts.

## NECKBAND

Block all pieces according to ball band instructions. Using colour A, join the right shoulder seam with a back stitch.

With RSF, using 3,25 mm Ns and colour A, pick up and k 12 sts down left side of front neck, k across 14 (14;18) sts for centre front neck held on st holder, pick up and k 12 sts up right side of front neck and k across 32 (32;36) sts held on st holder for centre back neck [70 (70;78) sts].

Starting with a WSR, work 8 rows in rib patt as given for Back. C/off all sts loosely in rib.

## TO MAKE UP

With colour A, join the left shoulder seam using back stitch. Use ladder stitch to join the neckband edges together. Darn in all the loose ends of yarn. Pin the sleeve top into armhole so the centre of the c/off edge sits in the centre of shoulder seam. Sew the sleeve top in position using a back stitch. Join side and sleeve seams using a ladder stitch. Darn in any remaining loose ends of yarn.



© KNITTING BASICS, BY TRACEY LORD,  
CICO BOOKS (R265, TAKEALOT.COM)

---

# HAPPY BUNNY

*Babies and young children will love to play with this cute cuddly bunny*

---

## MEASUREMENTS

53 cm from the tip of the ears to his feet.

## MATERIALS

**Note:** You can use any machine-washable DK yarn and colour for this bunny. Choose a soft or brushed yarn to make the bunny more huggable.

- 3 x 50 g balls of Elle Family Knit DK in Light Grey, Shade 011
- 1 pair 4 mm knitting needles
- 25-cm square piece of floral-print cotton fabric for inside of ears
- Iron-on interfacing
- Oddments of brown and light pink DK yarn for embroidering the face
- Oddments of any cream yarn for pompom tail
- Sewing thread in matching colour to fabric
- Tapestry needle
- Polyester toy stuffing
- Piece of card for pompom templates
- Pair of compasses and pencil
- Craft scissors
- 50 cm length of pink and white gingham ribbon 3 cm wide

## TENSION

22 sts and 28 rows to 10 cm measured over st st using 4 mm Ns.

## HEAD, BODY AND LEGS (made in one piece)

Using 4 mm Ns, c/on 9 sts.

**1st row (RS):** (kfb, k1) 4 times, k1 [13 sts].

**2nd and every foll alt rows:** p.

**3rd row:** (kfb, k1, kfb) 4 times, k1 [21 sts].

**5th row:** (kfb, k3, kfb) 4 times, k1 [29 sts].

**7th row:** (kfb, k5, kfb) 4 times, k1 [37 sts].

**9th row:** (kfb, k7, kfb) 4 times, k1 [45 sts].

**11th row:** (kfb, k9, kfb) 4 times, k1 [53 sts].

**12th row:** p.

Starting with a k row, work 12 rows straight in st st on these 53 sts.

**25th row:** (k2tog, k9, skpo) 4 times, k [45 sts].

**26th and every foll alt rows:** p.

**27th row:** (k2tog, k7, skpo) 4 times, k1 [37 sts].

**29th row:** (k2tog, k5, skpo) 4 times, k1 [29 sts].

**31st row:** k.

**33rd row:** (kfb, k5, kfb) 4 times, k1 [37 sts].

**35th row:** (kfb, k7, kfb) 4 times, k1 [45 sts].

**37th row:** (kfb, k9, kfb) 4 times, k1 [53 sts].

**39th row:** (kfb, k11, kfb) 4 times, k1 [61 sts].

**40th row:** p.

Starting with a k row, work 24 rows straight in st st on these 61 sts.

**65th row:** (k2tog, k11, skpo) 4 times, k1 [53 sts].

**66th row and every foll alt rows:** p.

**67th row:** (k2tog, k9, skpo) 4 times, k1 [45 sts].

**69th row:** (k2tog, k7, skpo) 4 times, k1 [37 sts].

**70th row:** p.

## Divide for legs:

Cont on the rem 37 sts.

**71st row:** k2tog, k15, k2tog, k16, k2tog [34 sts].

Cont working on the next 17 sts only for the right leg; leave the rem 17 sts on a st holder.

**\* 72nd row:** p.

Starting with a k row, work 36 rows straight in st st on these 17 sts.

**109th row:** k7, kfb, kfb, k8 [19 sts].

**110th and every foll alt rows:** p.

**111th row:** k8, kfb, kfb, k9 [21 sts].

**113th row:** k9, kfb, kfb, k10 [23 sts].

**115th row:** k10, kfb, kfb, k11 [25 sts].

**117th row:** k11, kfb, kfb, k12 [27 sts].

**119th row:** k2tog, k23, k2tog [25 sts].

**121st row:** k2tog, k9, k3tog, k9, k2tog [21 sts].

**122nd row:** p.

C/off \*.

With WS facing, sl the 17 sts from the st holder back onto the N and rejoin the yarn.

Work the left leg exactly as given for the right leg from \* to \*.

## ARMS (both alike)

Using 4 mm Ns, c/on 17 sts.

Starting with a k row, work in st st for 36 rows.









**37th row:** k7, kfb, kfb, k8 [19 sts].  
**38th and every foll alt row:** p.  
**39th row:** k8, kfb, kfb, k9 [21 sts].  
**41st row:** k9, kfb, kfb, k10 [23 sts].  
**43rd row:** k10, kfb, kfb, k11 [25 sts].  
**44th row:** (skpo) 6 times, k1, (k2tog) 6 times [13 sts].  
**45th row:** p.

Cut the yarn and thread it through the sts with a tapestry needle, pull up tightly to form gathers for the hands. Fasten off.

### **EARS** (both alike)

Using 4 mm Ns, c/on 5 sts.

**1st row (RS):** k1, kfb, kfb, k2 [7 sts].

**2nd and every foll alt rows:** p.

**3rd row:** k2, kfb, kfb, k3 [9 sts].

**5th row:** k3, kfb, kfb, k4 [11 sts].

**6th row:** p.

Starting with a k row, work 20 rows straight in st st on these 11 sts.

**27th row:** k4, k3tog, k4 [9 sts].

**28th row:** p.

**29th row:** k.

C/off.

### **TO MAKE UP**

**Body:** Fold the bunny in half with the right sides together. Starting at the top of the head, sew the head and body seam with a back stitch. Turn the rabbit through to the right side. The completed seam must sit in the centre back. Fill the head and body firmly with stuffing.

**Legs:** Fold the legs in half and, starting with the inner leg, sew the seam and foot closed using a ladder stitch. Leave an opening in the inner leg of about 5 cm for stuffing. Fill legs firmly with stuffing, using a knitting needle to push stuffing into the smaller areas. Close the opening neatly.

**Arms:** Fold the arms in half with the right sides out and, using a ladder stitch, join the side and hand seam in one process. Leave the top of the arm open for stuffing. Fill arms with stuffing, using a knitting needle to push stuffing into the hand sections. Close the opening neatly. Attach the top of the arms to the body, placing each immediately below the head shaping as shown in the picture.

**Ears:** Using the knitted ear as a template, draw an inner ear on the printed fabric, making the inner ear slightly smaller than the knitted ear. Apply iron-on interfacing at the back of the fabric and cut out. Place the knitted ear on a work surface, with the wrong side up, and place the inner ear on top. Using a matching-coloured sewing thread and working in small, neat blanket stitches or slipstitches, sew the inner ear in place around all the edges. Attach the ears to the top of the rabbit's head. Curl the edges of the knitted ear over the inner ear.

**Face:** Using the head shaping as a guide and working with the tapestry needle and the brown yarn, embroider the eyes using a satin stitch. Using the same brown yarn and working in back stitch, embroider the mouth. Using the pink yarn and working in satin stitch, embroider the nose. Make sure all the ends of the yarn are darned in securely.

**Finishing touches:** For the tail, make a pom-pom using the cream yarn. Cut out two cardboard templates for the pom-pom with the outer circle about 9 cm in diameter and the inner circle 4 cm diameter (see page 80 for instructions). Attach the finished pom-pom securely to the rabbit's bottom. Cut the ends of the ribbon on the bias, tie the ribbon around the neck and tie a bow. The ribbon will also disguise the seams that join the arms to the body.

© THE KNITTERS' BIBLE BABY KNITS, BY LAURA LONG,  
 PUBLISHED BY DAVID AND CHARLES (R345, RARU.CO.ZA)



---

# PLAY WITH STRIPES

*This top is based on the classic rugby shirt with colourful stripes contrasted against a crisp white collar*

---

## MEASUREMENTS

### To fit

1-2 (2-3; 3-4) years

### Actual chest measurement

64 (69;74) cm

### Length to shoulder

36 (40;43) cm

### Sleeve length

22 (24;28) cm

## MATERIALS

- 1 (2;2) x 100 g balls of Elle Pure Gold DK in Lily, Shade 033 (colour A).
- 1 (1;2) x 100 g balls of Elle Pure Gold DK in each of these colours: Riviera, Shade 40 (colour B); Titanium, Shade 201 (colour C); Blush, Shade 026 (colour D); Midnight, Shade 005 (colour E).
- 1 x 100 g ball of Elle Pure Gold DK in each of these colours: Ultra Marine, Shade 072 (colour F); Ruby, Shade 001 (colour G); and Taupe, Shade 045 (colour H).
- 1 pair each 3,25 mm and 4 mm knitting needles.
- 3 stitch holders or large safety pins.

## TENSION

22 sts and 30 rows to 10 cm measured over st st using 4 mm Ns.

## NOTE

Instructions are given for the smallest size with the larger sizes in brackets ( ); where one set of figures is given it applies to all sizes.

## STRIPE PATTERN

3 rows in colour B, 3 rows in colour C, 1 row in colour A, 2 rows in colour H, 3 rows in colour D, 2 rows in colour G,

1 row in colour A, 4 rows in colour E, 1 row in colour F and 1 row in colour A.

These 21 rows form the stripe sequence throughout.

As there are many colours in this stripe pattern you won't be able to weave the colours not in use up the side edge.

Rather join in the new colour when required and darn in loose ends when the garment is completed.

## BACK

With 3,25 mm Ns and colour B, c/on 70 (74;82) sts.

**1st row (RS):** k2, \* p2, k2; rep from \* to end.

**2nd row:** p2, \* k2, p2; rep from \* to end.

These 2 rows form the rib patt.

Rep the last 2 rows once more, inc 2 (2;0) sts evenly across the last row [72 (76;82) sts].

Change to 4 mm Ns. Beg with a k row, work the stripe patt in st st until the work measures 36 (40;43) cm from the beg, ending with a WSR.

## Shape shoulders

C/off 12 (12;13) sts at beg of next 2 rows [48 (52;56) sts].

C/off 11 (12;13) sts at the beg of the next 2 rows [26 (28;30) sts].

Leave these rem 26 (28;30) sts on a st holder for the centre back neck.

## FRONT

Work as given for Back until work measures 25 (28;31) cm from the beg, ending with a WSR.

## Divide for front opening

**Next row:** k34 (36;39), turn. Leave the rem sts on a spare N. Work on these sts for the first side of front neck.

Work 5 (6;6) cm straight on these sts, ending the row at the side edge.

## Shape neck

**Next row:** k to last 6 (7;8) sts, leave these sts on a st holder for the collar.

Now dec 1 st at the neck edge on every row until 23 (24;26) sts rem on the Ns. Work straight on these sts until the work measures the same as the Back to shoulder, ending the row at the side edge.

## Shape shoulder

C/off 12 (12;13) sts at beg of next row [11 (12;13) sts].

Work 1 row. C/off the rem 11 (12;13) sts.

## Shape other side of neck

With RSF, rejoin the yarn to the sts held on spare N, c/off the next 4 sts for centre front opening, k to end of row. Now complete the neck and shoulders to match the first side of neck, reversing all the shapings.

## SLEEVES

Using 3,25 mm Ns and colour B, c/on 38 (38;42) sts. Work 4 (5;5) cm in rib patt as given for Back, ending with a RSR.

**Inc row (WS):** rib 4 (5;4), \*M1, rib 6 (4;7); rep from \* to last 4 (5;3) sts, M1, rib 4 (5;3) [44 (46;48) sts].

Change to 4 mm Ns. Beg with a k row, work the stripe patt in st st, at the same time inc 1 st at each end of the row on the 3rd and every foll 4th (4th;5th) row until there are 64 (68;72) sts on the Ns.

Cont straight on these sts until work measures 22 (24;28) cm from the beg, ending with a WSR. C/off.

## LEFT FRONT BAND

With RSF, using 3,25 mm Ns and colour A, pick up and k 16 sts down the left side of front neck.

**1st row:** k1, [p2, k2] 3 times, p2, k1.

**2nd row:** k3, [p2, k2] twice, p2, k3.

Rep the last 2 rows once more.

Rep the 1st row once more.

C/off in rib patt.

## RIGHT FRONT BAND

With RSF, using 3,25 mm Ns and colour A, pick up and k 16 sts up the right side of front neck.

Work 5 rows rib as given for left front band.

## COLLAR

Using a back stitch, join the shoulder seams. With RSF, using 3,25 mm Ns and colour A, sl 6 (7;8) sts from the st holder on the right front neck onto a N, pick up and k 15 (15;17) sts up the right side of front neck, k 26 (28;30) sts from centre back neck held on st holder, pick up and k 15 (15;17) sts down the left side of front neck, k 6 (7;8) sts from the st holder on the left front neck [68 (72;80) sts].

**1st row (WS):** k1, [p2, k2] 16 (17;19) times, p2, k1.

Cont in rib patt as given for the left front band from the 2nd row (this will be a RS row), working the collar shaping as follows:



**Next 2 rows:** rib to last 20 sts, turn.

**Next 2 rows:** rib to last 16 sts, turn.

**Next 2 rows:** rib to last 12 sts, turn.

**Next 2 rows:** rib to last 8 sts, turn.

**Next row:** rib to last 5 sts, p2, k3.

Work a further 16 rows in rib patt.

C/off in rib patt.

## TO MAKE UP

Darn in all the loose ends of yarn at the back of the work, cutting away excess yarn carefully. Set in sleeves, making sure the centre of the sleeve is placed in the centre of shoulder seam. Using a ladder stitch, join the side and sleeve seams. Place the lower edge of the right front band over the lower edge of left front band so it overlaps and sew in place neatly.



PATTERN FROM COTTON KNITS FOR ALL SEASONS, BY DEBBIE BLISS, PUBLISHED BY CICO BOOKS (R449,RARU.CO.ZA)



---

# STYLISH SNOOD

*Try your hand at arm knitting – it's so quick and easy you'll be able to make this gorgeous accessory, also known as an infinity scarf, in less than an hour*

---

## MATERIALS

**Note:** The yarn used for the snood in the picture is a super-chunky weight, with a recommended knitting needle size 8 mm. If you use another chunky yarn, make sure it's the correct ply and check the ball band for the recommended knitting needle size, otherwise the stitches may be too thin and won't hold to form a knitted fabric.

- 2 x 150 g balls of Charity Seriously Chunky in Silver Grey, Shade 011
- Tapestry needle

## BEFORE YOU BEGIN

You don't have to be an experienced knitter to try out this technique in which you use your arms instead of knitting needles. Try a practice sample first with scraps of yarn, following the diagrams below. Once you've mastered the technique, start the snood.

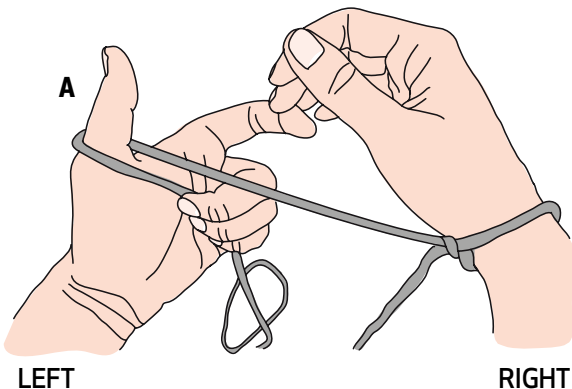
## NOTE

Use two strands of yarn together throughout, treating these strands as one.

## TO CAST ON

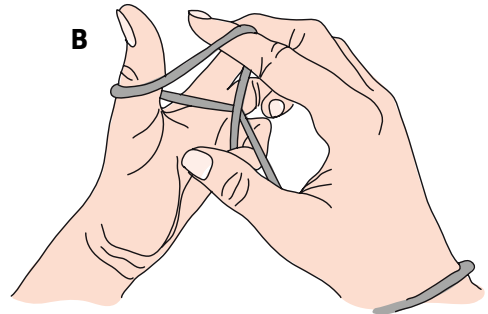
### Step 1 (diagram A)

Make a large loose slip knot and place the knot around your right arm, leaving the tail end of yarn to hang. This is your first cast on stitch. Now wrap the other end of yarn from the ball (the working yarn) around your left hand thumb. Always leave the tail end of yarn closer to you and the working yarn further away from you.



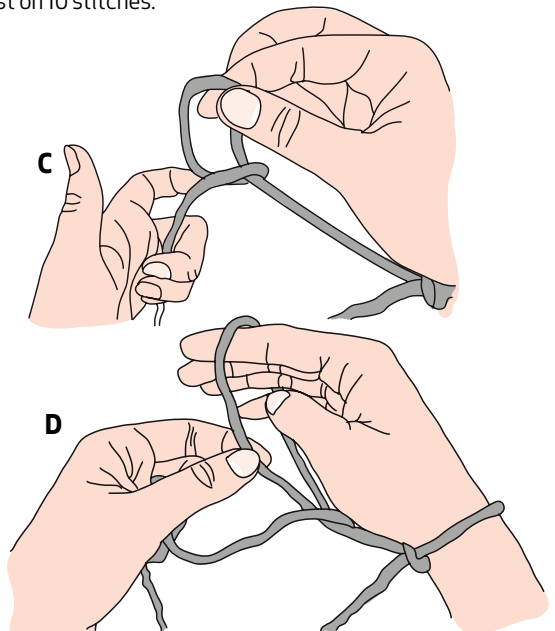
### Step 2 (diagram B)

Take your right hand and place it underneath the working yarn. Using your right hand index finger, pull up the yarn to form a triangle, which is the start of forming a loop. At the same time, make sure you hold the working yarn taut to keep the stitch in position. Transfer your index finger to the bottom yarn of the triangle and pull the loop off your thumb. (Refer to diagram C below to make sure the loop is created in the right way.)



### Step 3 (diagrams C & D)

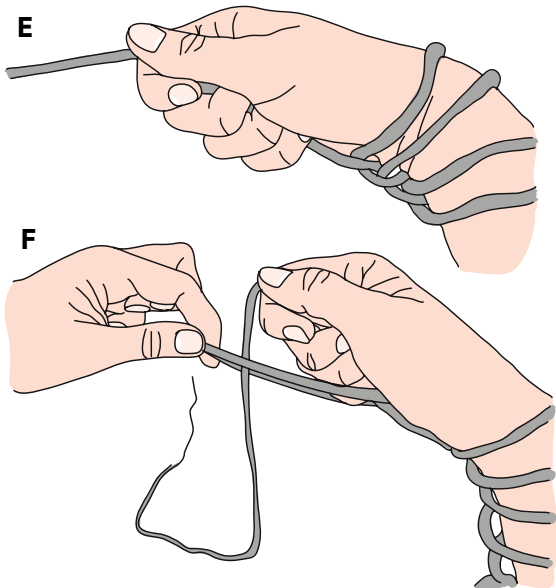
Place the new loop from your right index finger over your right hand and onto your arm. You have now worked the second cast on stitch. Continue in this way until you have cast on 10 stitches.



## TO KNIT

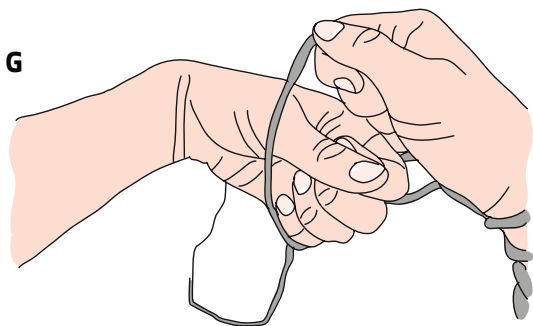
### Step 4 (diagrams E & F)

To start knitting, hold the working yarn that is hanging from the last cast-on stitch in your right hand. Now using your left hand, pull the first stitch from your right arm over your hand, making sure you're still holding the working yarn in your right hand. Once the stitch is off your hand it will also create a triangular shape.



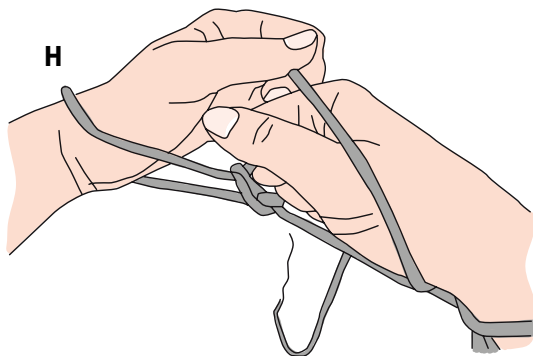
### Step 5 (diagram G)

Put your left hand through the triangle from the back coming towards you, and place the stitch on your left arm. Pull the working yarn to tighten the stitch. You have now completed the first stitch on the first row.



### Step 6 (diagram H)

Continue working in this way, working each stitch off your right arm until all the stitches are transferred onto your left arm. The first row is completed. Working in the same way, transfer the stitches on your left arm to the right arm to work the second row. Continue arm knitting, working rows backwards and forwards from right arm to left arm and back, until your knitting is the required length. To create the snood, the ends of the scarf are sewn together, rather than leaving it in one long piece. Try it around your neck as you work so you can make the length to your liking. It's best to finish off with a row where all the stitches are back on the right arm.



### TO CAST OFF (no diagram)

Knit two stitches, now pull the first stitch that you have worked over the second stitch and let it drop off your arm, knit the next stitch and pull the second stitch over the third stitch and let it drop off your arm. Continue in this way until all stitches are cast off. Pull the end of yarn through the last stitch to fasten.

### TO COMPLETE

Secure the ends of yarn and cut away any excess. Sew the two ends of the scarf together, using a tapestry needle and one strand of yarn; this will form the snood.

PATTERN AND DESIGN BY SAPROTEX INTERNATIONAL



# WRAPOVER CARDI

*This classic top has a pretty floral border and lace edging. It uses the intarsia technique – where colours are worked in areas rather than carrying unused yarns along the back – and does need a lot of concentration*

## MEASUREMENTS

### To fit

81 (86;91) cm

### Actual bust measurements

87 (91;95) cm

### Length to shoulder

47 (50;53) cm

### Sleeve seam

35 (36;37) cm

## MATERIALS

**Note:** The garment is knitted in a 4-ply cotton yarn. It's best to use the same quality yarn for the motifs. If you're unable to buy this cotton, use Elle Pure Gold 4-ply yarn.

- 10 (11;12) x 50 g balls of Elle 4 Ply Premier Natural Cotton in White, Shade 001
- Oddments of 4-ply cotton in pale pink, dark pink, light green and dark green for motifs
- 1 pair each 2,75 mm and 3,25 mm knitting needles

## TENSION

25 sts and 30 rows to 10 cm measured over st st using 3,25 mm Ns.

## NOTE

Instructions are given for the smallest size with the larger sizes in brackets ( ); where one set of figures is given it applies to all sizes.

## TO READ THE COLOUR CHART

The flower design for the lower border of the cardigan is given on the chart (see right). Each square represents a stitch. Read the chart from right to left on right side rows and from left to right on wrong side rows. Follow the chart and tick off the row as you complete it. When working the colour motifs, use separate lengths of the yarn for each coloured area. To avoid holes forming at the colour change on each row, the yarn from the previous stitch must pass over the yarn to be used for the next stitch.

## BACK

With 2,75 mm Ns, c/on 81 (86;91) sts.

Work 9 rows in g st.

Change to 3,25 mm Ns.

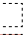




Beg with a k row, work 4 rows in st st.

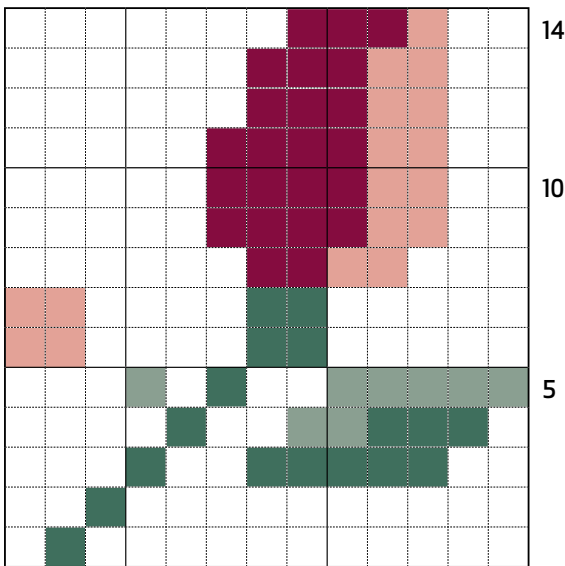
**Next row (RS):** k4 (5;6), \*work the 1st row of chart over the next 13 sts, k7 (8;9); rep from \* to last 17 (18;19) sts, work the 1st row of chart over the next 13 sts, k4 (5;6).





**KEY**

|  |           |   |             |
|--|-----------|---|-------------|
|   | Main      |  | Light green |
|   | Pale pink |  | Dark green  |
|  | Dark pink |   |             |



13

**Next row:** p4 (5;6), \* work the 2nd row of chart over the next 13 sts, p7 (8;9); rep from \* to last 17 (18;19) sts, work the 2nd row of chart over the next 13 sts, p4 (5;6). These 2 rows set the patt. Cont, foll the chart in this way, until the 14th row has been completed. At the same time shape the sides as folls:

**Inc row (RS):** k3, M1, patt to last 3 sts, M1, k3 [83 (88;93) sts].

Work 5 rows in patt on these sts.

Rep the last 6 rows 13 times more, then work the inc row again [111 (116;121) sts].

Cont straight in st st on these sts until the back measures 29 (31;33) cm from the beg, ending with a WS row.

#### Shape armholes

C/off 5 sts at beg of next 2 rows [101 (106;111) sts].

C/off 4 sts at beg of next 2 rows [93 (98;103) sts].

**Next row:** k3, SKPO, k to last 5 sts, k2tog, k3 [91 (96;101) sts].

**Next row:** p to end.

Rep the last 2 rows 7 (8;9) times more [77 (80;83) sts].

Cont straight on these sts until the work measures 46 (49;52) cm from the beg, ending with a WS row.

### Shape neck

**Next row:** k23 (24;25) sts, turn. Leave the rem sts on a spare N.

Work on these 23 (24;25) sts only for first side of neck. Dec 1 st at the neck edge on the next 3 rows [20 (21;22) sts].

### Shape shoulder

**Next row (RS):** c/off 10 (11;11) sts at beg of next row [10 (10;11) sts].

Work 1 row.

C/off the rem 10 (10;11) sts.

### Shape other side of neck and shoulder

With the RS of work facing, rejoin the yarn to the rem sts on spare N, c/off the next 31 (32;33) sts for centre back neck, k to end of row.

Now work as given for first side of neck, but reversing the shapings.

### LEFT FRONT

Using 2,75 mm Ns, c/on 81 (86;91) sts.

Work 9 rows in g st.

Change to 3,25 mm Ns.

**Next row (RS):** k to end.

**Next row:** k3, p to end.

Rep the last 2 rows once more.

**Next row (RS):** k4 (5;6), \* work the 1st row of chart over the next 13 sts, k7 (8;9); rep from \* to last 17 (18;19) sts, work the 1st row of chart over the next 13 sts, k4 (5;6).

**Next row:** k3, p1 (2;3), \* work the 2nd row of chart over the next 13 sts, p7 (8;9); rep from \* to last 17 (18;19) sts, work the 2nd row of chart over the next 13 sts, p4 (5;6).

These 2 rows set the patt. Cont, foll the chart in this way, until the 14th row has been completed. At the same time shape the sides as folls:

**Inc row (RS):** k3, M1, patt to last 3 sts, M1, k3 [83 (88;93) sts].

Work 5 rows in patt on these sts.

Rep the last 6 rows 3 times more, then work the inc row again [91 (96;101) sts].

Work 2 rows straight on these sts.

### Shape neck

**Note:** As inc and dec are worked alongside the rows to create the necessary shaping, a stitch count at the end of each row is not given here. If you find it a bit confusing to keep a record of the sts, jot down the rows on a piece of

paper and tick them off as you work.

**Next row (WS):** c/off 5 sts, p to end.

**Next row:** k to last 3 sts, k2tog, k1.

**Next row:** p to end.

**Next row:** k3, M1, k to last 3 sts, k2tog, k1.

**Next row:** p to end.

Cont to dec at the neck edge on every alt row and at the same time cont to inc at the side edge on every 6th row until 15 incs have been worked in all. Now keep the side edge straight until the front measures 29 (31;33) cm from the beg, ending with a WS row.

### Shape armhole

**Next row:** c/off 5 sts, k to last 3 sts, k2tog, k1.

**Next row:** p to end.

**Next row:** c/off 4 sts, k to last 3 sts, k2tog, k1.

**Next row:** p to end.

**Next row:** k3, SKPO, k to last 3 sts, k2tog, k1.

**Next row:** p to end.

Rep the last 2 rows 7 (8;9) times more.

Keeping the armhole edge straight, cont to dec 1 st at neck edge as before on every alt row until 20 (21;22) sts rem on the Ns.

Work straight on these sts until the work measures the same as Back to shoulder shaping, ending the row at the armhole edge.

### Shape shoulder

C/off 10 (11;11) sts at beg of next row [10 (10;11) sts].

Work 1 row.

C/off the rem 10 (10;11) sts.

### RIGHT FRONT

Using 2,75 mm Ns, c/on 81 (86;91) sts.

Work 9 rows in g st.

Change to 3,25 mm Ns.

**Next row:** k to end.

**Next row:** p to last 3 sts, k3.

Rep the last 2 rows once more.

**Next row (RS):** k4 (5;6), \* work the 1st row of chart over the next 13 sts, k7 (8;9); rep from \* to last 17 (18;19) sts, work the 1st row of chart over the next 13 sts, k4 (5;6).

**Next row:** p4 (5;6), \* work the 2nd row of chart over the next 13 sts, p7 (8;9); rep from \* to last 17 (18;19) sts, work the 2nd row of chart over the next 13 sts, p1 (2;3), k3.

These 2 rows set the patt. Cont, foll the chart in this way, until the 14th row has been completed. At the same time shape the sides as folls:

**Inc row (RS):** k3, M1, patt to last 3 sts, M1, k3 [83 (88;93) sts].

Work 5 rows in patt on these sts.

Rep the last 6 rows 3 times more, then work the inc row again [91 (96;101) sts].

Work 1 row straight on these sts.

### Shape neck

**Next row (RS):** c/off 5 sts, k to end.

**Next row:** p to end.

**Next row:** k to last 3 sts, k2tog, k1.

**Next row:** p to end.

**Next row:** k1, SKPO, k to last 3 sts, M1, k3.

**Next row:** p to end.

Cont to dec at the neck edge on every alt row and at the same time cont to inc at the side edge on every 6th row until 15 incs have been worked in all. Now keep the side edge straight until the front measures 29 (31;33) cm from the beg, ending with a RS row.

### Shape armhole

**Next row (WS):** c/off 5 sts, p to end.

**Next row:** k1, SKPO, k to end.

**Next row:** c/off 4 sts, p to end.

**Next row:** k1, SKPO, k to last 5 sts, k2tog, k3.

**Next row:** p to end.

Rep the last 2 rows 7 (8;9) times more.

Keeping the armhole edge straight, cont to dec 1 st at neck edge as before on every alt row until 20 (21;22) sts rem on the Ns.

Work straight on these sts until the work measures the same as Back to shoulder shaping, ending the row at the armhole edge.

### Shape shoulder

C/off 10 (11;11) sts at beg of next row [10 (10;11) sts].

Work 1 row.

C/off the rem 10 (10;11) sts.

### SLEEVES (both alike)

Using 2,75 mm Ns, c/on 54 (58;62) sts.

Work 9 rows in g st.

Change to 3,25 mm Ns.

Starting with a k row, work 2 (4;6) rows in st st.

**Inc row (RS):** k3, M1, k to last 3 sts, M1, k3 [56 (60;64) sts].

Beg with a p row, cont in st st, inc 1 st at each end of row on

every foll 8th row until there are 80 (84;88) sts on the Ns. Cont straight on these sts until the sleeve measures 35 (36;37) cm from the beg, ending with a WS row.

### Shape sleeve top

C/off 5 sts at beg of next 2 rows [70 (74;78) sts].

C/off 4 sts at the beg of next 2 rows [62 (66;70) sts].

**Next row:** k3, SKPO, k to last 5 sts, k2tog, k3 [60 (64;68) sts].

**Next row:** p to end.

**Next row:** k to end.

**Next row:** p to end.

Rep the last 4 rows 3 (3;4) times more and then work the first 2 rows 0 (1;0) times [54 (56;60) sts].

C/off.

### LACE EDGING

Using 2,75 mm Ns, c/on 4 sts.

K 1 row.

**1st row (RS):** k2, yfwd, k2 [5 sts].

**2nd and every foll alt rows:** sl 1, k to end.

**3rd row:** k3, yfwd, k2 [6 sts].

**5th row:** k2, yfwd, k2tog, yfwd, k2 [7 sts].

**7th row:** k3, yfwd, k2tog, yfwd, k2 [8 sts].

**8th row:** c/off 4 sts, k to end [4 sts].

Rep the last 8 rows until the edging, when slightly stretched, fits around the entire neck edge, starting and ending at the side edges.

### TIES (make 2)

Using 2,75 mm Ns, c/on 5 sts. Work in g st until the tie measures 74 cm from the beg. C/off.

### TO COMPLETE

Darn in all the loose ends of yarn at the back of the work. Carefully block the pieces to measurement. Using a back stitch, join the shoulder seams. Insert the sleeve head into the armholes so the c/off edges align and the centre of sleeve head fits in the centre of shoulder seam. Attach the ties to the fronts so they're level with the beginning of the neck shaping. Using a ladder stitch, join the side and sleeve seams, leaving a small gap in the right seam level with neck shaping for the tie to pass through. Sew the lace edging in place all around the front with a neat slip stitch. PATTERN FROM COTTON KNITS FOR ALL SEASONS, BY DEBBIE BLISS, PUBLISHED BY CICO BOOKS (R449, RARU.CO.ZA)



# CASUAL CARDIGAN

*This soft fitted cardigan has a cable feature down the centre back. The lower edges and sleeves have a ruffle edging that give the cardigan a feminine touch. The pattern is suitable for an advanced knitter*

## MEASUREMENTS

### To fit

91 (97;102) cm

### Actual bust measurement

102 (106;112) cm

### Length from shoulder

67 (70;70) cm

### Sleeve seam

45 (46;46) cm

## MATERIALS

**Note:** The cardigan is knitted in a soft DK yarn. You can use any DK yarn of your choice in a wool and cotton blend.

- 13 (15;17) x 50 g balls of DK in a colour of your choice
- 2,5 mm and 4,5 mm circular knitting needles, 60 cm long
- 1 pair 4,5 mm knitting needles
- Cable needle
- Stitch holder
- 10 small mother-of-pearl buttons

## TENSION

20 sts and 28 rows to 10 cm measured over st st using 4,5 mm Ns.

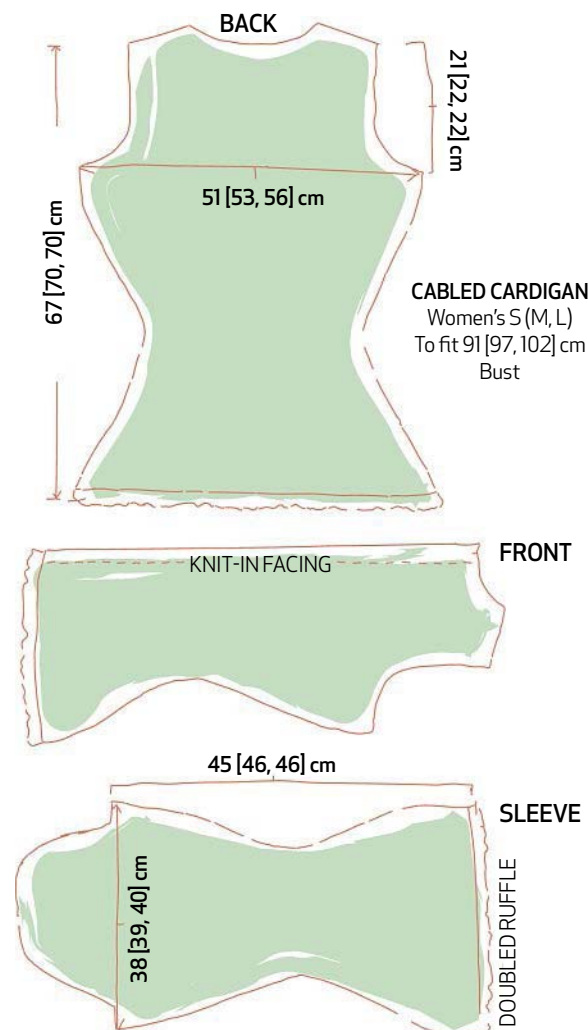
## NOTE

Instructions are given for the smallest size with the larger sizes in brackets ( ); where one set of figures is given it applies to all sizes.

## BEFORE YOU BEGIN

Circular knitting needles are used in this pattern as there are too many stitches for a regular pair of knitting needles

to hold. Use these needles in exactly the same way as a pair of knitting needles, turning the work after completing each row.



## BACK

Using 4,5 mm circular N and working in rows, c/on 212 (220;232) sts.

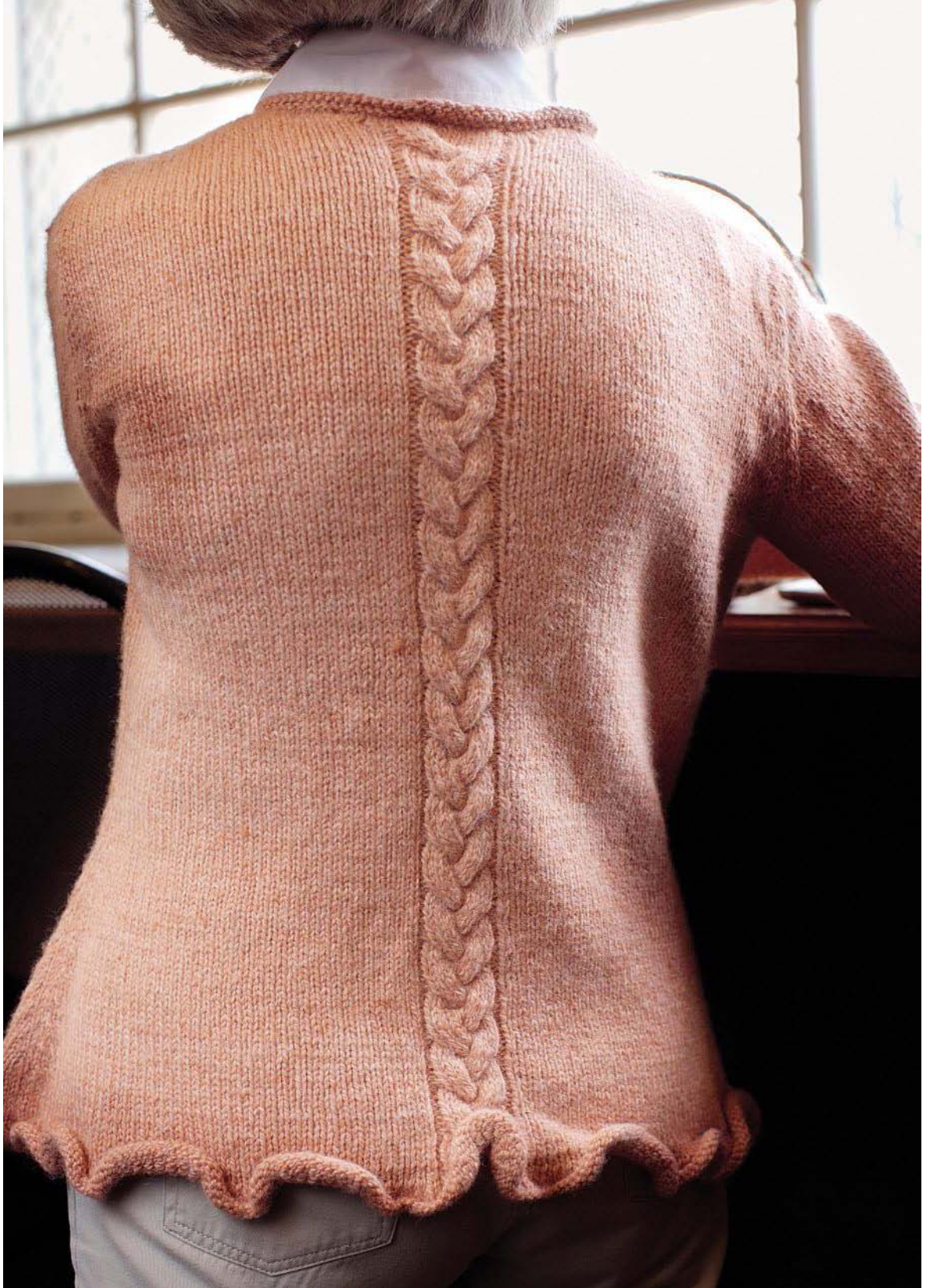
### Work the ruffle edging as folls:

Beg with a p row, work in st st for 5 rows.

Change to 2,75 mm circular N.

**Next row (RS):** \* k2tog; rep from \* across row [106 (110;116) sts].

P 1 row.



Change to 4,5 mm circular N.

### Work cable patt as folls:

**1st row (RS):** k46 (48;51), p2, C6B, k3, p2, k47 (49;52).

**2nd, 4th and 6th rows:** p47 (49;52), k2, p9, k2, p46 (48;51).

**3rd row:** k46 (48;51) sts, p2, k9, p2, k47 (49;52).

**5th row:** k46 (48;51), p2, k3, C6F, p2, k47 (49;52).

**7th row:** work as given for 3rd row.

**8th row:** work as given for 2nd row.

These 8 rows form the plaited cable patt and are rep throughout the back to c/off edge.

Cont working in patt until the work measures 7 (7;8) cm from the beg, ending with a WS row.

### Shape sides

**Dec row (RS):** k2, ssk, work to last 4 sts, k2tog, k2 [104 (108;114) sts].

**Next row:** patt to end.

Cont working in patt, working a dec as set at each end of row on every foll 4th row until there are 84 (86;92) sts rem on the N.

Work 7 rows straight on these sts, ending with a WS row.

**Inc row (RS):** k2, M1, patt to last 2 sts, M1, k2 [86 (88;94) sts].

**Next row:** patt to end.

Cont working in patt, working an inc as set at each end of row on every foll 6th row until there are 100 (92;100) sts on the N.

Now inc 1 st at each end of row on every foll 4th row until there are 102 (106;112) sts on the N.

Cont straight on these sts until the work measures 43 (44;45) cm from the beg, ending with a WS row.

### Shape armholes

C/off 7 (8;9) sts at the beg of the next 2 rows [88 (90;94) sts].

**Dec row (RS):** k2, ssk, work to last 4 sts, k2tog, k2 [86 (88;92) sts].

**Next row:** patt to end.

Rep the dec row on the next and every foll 3 (3;4) alt rows [78 (80;84) sts].

**Next row:** patt to end.

Now work a dec on every foll 4th row 3 times more [72 (74;76) sts].

Work straight on these sts until the armhole measures 21 (22;22) cm from the c/off row, ending with a WS row.

### Shape neck and shoulders

C/off 3 (4;5) sts, k26, turn. Leave the rem sts on a spare N.

Work on this set of sts only for the first side.

C/off 4 sts at the beg of next 2 rows [18 sts].

C/off 3 sts at beg of next row [15 sts].

C/off 4 sts at beg of row [11 sts].

**Next row (WS):** p2, p2tog, p to end [10 sts].

C/off 5 sts at beg of row [5 sts].

C/off the rem 5 sts.

### Shape second side of neck and shoulder

Sl the next 14 sts held on spare N onto a st holder for the centre back neck. With the RS of work facing, rejoin yarn to the next st and patt to end of row.

C/off 3 (4;5) sts at the beg of next row.

C/off 4 sts at beg of next 2 rows [18 sts].

C/off 3 sts at beg of row [15 sts].

C/off 4 sts at beg of row [11 sts].

**Next row (RS):** k2, ssk, k to end [10 sts].

C/off 5 sts at beg of row [5 sts].

C/off the rem [5 sts].

### LEFT FRONT

Using 4,5 mm circular N and working in rows, c/on 115 (119;125) sts.

### Work the ruffle edging as folls:

**1st and 3rd rows (WS):** p.

**2nd and 4th rows:** k to last 5 sts, sl 1, k4.

**5th row:** p.

Change to 2,75 mm circular N.

**Next row (RS):** \*k2tog; rep from \* to last 5 sts, sl 1, k4 [60 (62;65) sts].

P 1 row.

Change to 4,5 mm circular N.

Starting with a k row, work in st st, working the last 5 sts of every k row, sl 1, k4 for the buttonband facing.

Cont in st st until work measures 7 (7;8) cm from the beg, ending with a WS row.

### Shape sides

**Dec row (RS):** k2, ssk, work to end of row [59 (61;64) sts].

**Next row:** patt to end.

Cont working in patt, working a dec as set at the beg of row on every foll 4th row until there are 49 (50;53) sts rem on the N.

Work 7 rows straight on these sts, ending with a WS row.

**Inc row (RS):** k2, M1, work to end of row [50 (51;54) sts].

**Next row:** patt to end.

Cont working in patt, working an inc as set at the beg of row on every foll 6th row until there are 57 (54;57) sts

on the N.

Now inc 1 st at the beg of row on every foll 4th row until there are 58 (60;63) sts on the N.

Cont straight on these sts until the work measures 43 (44;45) cm from the beg, ending with a WS row.

### Shape armholes

C/off 7 (8;9) sts at beg of next row [51 (52;54) sts].

P 1 row.

**Dec row (RS):** k2, ssk, work to end of row [50 (51;53) sts].

P 1 row.

Cont dec on next and every foll alt row 3 (3;4) times more [46 (47;48) sts].

Now dec 1 st at the beg of every foll 4th row 3 times [43 (44;45) sts].

Cont straight on these sts until the armhole measures 16 (17;17) cm from the c/off row, ending with a RS row.

### Shape neck

**1st row (WS):** c/off 8 sts, p to end of row [35 (36;37) sts].

**2nd, 4th and 6th rows:** k.

**3rd row:** c/off 4 sts, p to end of row [31 (32;33) sts].

**5th row:** c/off 3 sts, p to end of row [28 (29;30) sts].

**7th row:** c/off 3 sts, p to end of row [25 (26;27) sts].

**8th row (RS):** k to last 4 sts, k2tog, k2 [24 (25;26) sts].

**9th row:** p.

Now dec 1 st at neck edge on the next and every foll 2 alt rows [21 (22;23) sts].

**Next row:** p.

Cont straight on these sts until Left Front measures the same as Back to shoulder shaping, ending with a WS row.

### Shape shoulder

**1st row (RS):** c/off 3 (4;5) sts, k to end [18 sts].

**2nd, 4th and 6th rows:** p.

**3rd row:** c/off 4 sts, k to end [14 sts].

**5th row:** c/off 4 sts, k to end [10 sts].

**7th row:** c/off 5 sts, k to end [5 sts].

C/off rem 5 sts.

### RIGHT FRONT

Using 4,5 mm circular N and working in rows, c/on 115 (119;125) sts.

**Work the ruffle edging as folls:**

**1st and 3rd rows (WS):** p.

**2nd and 4th rows:** sl 1, k4, k to end.

**5th row:** p.

Change to 2,75 mm circular N.

**Next row (RS):** sl 1, k4, \*k2tog; rep from \* to end [60 (62;65) sts].

P 1 row.

Change to 4,5 mm circular N.

Starting with a k row, work in st st, working the first 5 sts of every k row, sl 1, k4 for the buttonhole facing.

Cont in st st until work measures 7 cm from the beg, ending with a WS row.

**Work a buttonhole as folls:**

**Buttonhole row (RS):** k2tog, yon, k2, sl 1, k2, yon, k2tog, work to end of row. [Two buttonholes are made, as the facing section of the buttonhole band is turned to the wrong side when completed].

Cont making buttonholes every 6 cm on the RS row, until 10 buttonholes in total have been completed.

At the same time when work measures 7 (7;8) cm from the beg, ending with a WS row, shape the sides.

### Shape sides

**Dec row (RS):** k to last 4 sts, k2tog, k2 [59 (61;64) sts].

**Next row:** p to end.

Cont working in patt, working a dec as set at the end of row on every foll 4th row until there are 49 (50;53) sts rem on the N.

Work 7 rows straight on these sts, ending with a WS row.

**Inc row (RS):** k to last 2 sts, M1, k2 [50 (51;54) sts].

**Next row:** p to end.

Cont working in patt, working an inc as set at the end of row on every foll 6th row until there are 57 (54;57) sts on the N.

Now inc 1 st at the end of row on every foll 4th row until there are 58 (60;63) sts on the N.

Cont straight on these sts until the work measures 43 (44;45) cm from the beg, ending with a RS row.

Now work exactly as given for the left front, but reversing all the shapings.

### SLEEVES (both alike)

Using 4,5 mm circular N and working in rows, c/on 140 (144;144) sts.

P 1 row.

Starting with a k row, work 4 rows in st st.

Change to 2,75 mm circular N.

**Next row (RS):** \*k2tog; rep from \* to end [70 (72;72) sts].

P 1 row.

Change to 4,5 mm Ns. There are not so many sts for the sleeves, so you can work on a regular pair of knitting Ns. Starting with a k row, work in st st until work measures





10 cm from c/on edge, ending with a WS row.

**Dec row (RS):** k2, ssk, k to last 4 sts, k2tog, k2 [68 (70;70) sts].

**Next row:** p to end.

Cont working in st st, working a dec as set at each end of row on every foll 6th row until there are 58 (60;60) sts rem on the Ns.

Work 5 (7;9) rows straight on these sts, ending with a WS row.

**Inc row (RS):** k2, M1, work to last 2 sts, M1, k2 [60 (62;62) sts].

**Next row:** p to end.

Cont working in st st, working an inc as set at each end of row on every foll 6th row until there are 70 (72;74) sts on the Ns.

**Next row:** p.

Now work an inc as set at each end of row on every foll 8th row until there are 74 (76;78) sts on the Ns.

Cont straight on these sts until work measures 45 (46;46) cm from the beg, ending with a WS row.

### Shape top

C/off 7 (8;9) sts at the beg of next 2 rows [60 sts].

**Dec row (RS):** k2, ssk, k to last 4 sts, k2tog, k2 [58 sts].  
P1 row.

Cont work dec as set at each end of row on the next and every foll alt row until 28 sts rem on the Ns.

C/off 2 sts at the beg of next 4 rows [20 sts].

C/off rem 20 sts.

### TO MAKE UP

Block all pattern pieces to measurement, following the instructions as given on the ball band. Leave to dry.

Turn the button band facing along the ridge that is created by the slipped st on the left front piece. Using small, neat slipstitches, sew the facing in place at the back of the work. In exactly the same way fold the buttonhole facing to the wrong side and stitch in place, making sure the buttonholes align.

Sew the buttons down the left front securely so they correspond with the buttonholes on the right front.

Join shoulder seams using a back stitch. Join side and sleeve seams using a ladder stitch. Ease the sleeve head into the armholes. This is a set-in sleeve and the centre of the c/off row must align with the shoulder seam.

### ROLLED NECKLINE

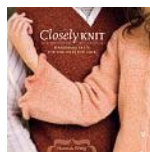
**Note:** Treat the front facings as one layer when picking up the stitches around the neckline.

Using 4,5 mm circular N and working in rows, with RS facing, pick up and k 36 (38;40) sts up the left front neck edge, pick up and k 10 sts down the left back neck edge, k across the 14 sts held on the st holder for centre back neck, pick up and k 10 sts up the right back neck edge and pick and k 36 (38;40) sts down right front neck edge [106 (110;114) sts].

Starting with a k row, for the WS row, work in st st for 3 cm, ending with a WS row.

C/off all sts pwise.

The neckline will roll over to the RS of work, with the wrong side facing.



© HANNAH FETTIG, NORTH LIGHT BOOKS 2008, TAKEN FROM THE TITLE "CLOSELY KNIT". (R355, RARU.CO.ZA)

---

# SLOUCHY BEANIE

*Knitted in an easy textured pattern in two complimentary tones, this comfy beanie will be a firm favourite in winter*

---

## MEASUREMENTS

### To fit head circumference

43-47 (48-52; 53-56) cm

### Actual finished width

45 (50;55) cm

### Full length before brim is turned back

35 (39;39) cm

## MATERIALS

- 1 x 100 g ball of Elle Pure Gold DK in Titanium, Shade 201 (colour A – for brim)
- 1 x 100 g ball of Elle Pure Gold DK in Stonewash, Shade 212 (colour B – for crown)
- 1 pair each 4,5 mm and 5,5 mm knitting needles
- Coloured marker
- Tapestry needle

## TENSION

22 sts and 24 rows to 10 cm measured over knot st patt using 5,5 mm Ns.

DK yarn is usually worked using a 4 mm N, however this design is worked with a larger N size so the stitch pattern is loose and the overall fabric more flexible.

## NOTE

Instructions are given for the smallest size with the larger sizes in brackets ( ).

## TO MAKE

Using 4,5 mm Ns and colour A, c/on 94 (110;120) sts.

**1st row (RS):** k1, \* with the yarn at back of work, sl1pw, k1,

pass the sl st over the st just worked and leave it on the left-hand N, k into back of this st; rep from \* to last st, k1.

**2nd row:** k1, p to last st, k1.

These 2 rows form the knot st patt and are rep throughout.

Cont in patt until work measures 6 (8;8) cm from the beg, ending with a RS row.

This forms the brim section of the beanie.

Change to colour B.

**Next row (WS):** k1, p to last st, k1.

**Next row (RS):** k1, p to last st, k1.

Now starting with 1st row of patt, cont in knot st patt,

**Note:** This is a RS row although it is the WS of the brim section.

The garment has been designed in this way so when the brim is turned back the knot st patt on the brim and the main section are correct.

Cont until work measures 9 (11;11) cm from the colour change, ending with a WS row.

Change to 5,5 mm Ns and, still working with colour B, cont in knot st patt until work measures 35 (39;39) cm from the c/on edge, ending with a WS row.

Place a coloured marker in the centre of the last row.

C/off all sts.

## TO MAKE UP

Using a ladder stitch, sew the seam together (this will be placed at the centre back). Make sure the seam is reversed for the brim section and that you sew each section with the correct colour. Turn beanie through to WS to form a tube, align the coloured marker with the centre back seam and sew across the top of seam using a back stitch. Turn through to the right side. Push the top seam into the beanie as featured in the photograph. Turn the brim up and sew a few stitches on each side to hold it in position.

**TIP** If you want the top of the beanie shaped at the end, sew a loose row of gathering stitches. Pull the gathering stitches in gently according to how much you'd like the end to be shaped, then close the top seam.

PATTERN AND DESIGN BY SAPROTEX INTERNATIONAL



---

# FLOWER POWER

*Add a fun touch to a throw with colourful oversized knitted daisies. The throw is made in three easy panels and the flowers appliquéd afterwards*

---

## MEASUREMENTS

### One size

150 x 145 cm

## MATERIALS

**Note:** This blanket is designed using a super-chunky yarn. Super-chunky handspun yarn is available at most good yarn stores. Check that the needle size on the ball band corresponds with the recommended size of the needle stated in this pattern before you buy the yarn. If you're unable to obtain this yarn, knit the throw with chunky yarn, working two strands together. Use two shades of blue in the chunky yarn and work with one strand of each throughout to create the mottled effect.

- 28 x 50 g balls of super-chunky yarn in sea green (colour A)
- 5 x 50 g balls of super-chunky yarn in cerise (colour B)
- 1 x 50 g ball of super-chunky yarn in cream (colour C)
- 1 pair 10 mm knitting needles
- 1 pair 9 mm double-pointed knitting needles or a circular needle
- Oddments of each colour yarn in a thinner weight for making up and appliquéd
- Tapestry needle
- Dressmaking pins

## TENSION

10 sts and 14 rows to 10 cm measured over st st using 10 mm Ns.

## LEFT PANEL

Using 10 mm Ns and colour A, c/on 51 sts.

\*Work 4 rows p. This will form a border exactly the same as an ordinary g st.

**Next row (RS):** k.

**Next row:** k2, p to last 2 sts, k2.

Rep the last 2 rows 30 times more.

Work the ridge patt as folls:

**\*\* Next row (RS):** k2, p to last 2 sts, k2.

Rep this row 3 times more. \*\*

**Next row (RS):** k.

**Next row:** k2, p to last 2 sts, k2.

Rep the last 2 rows 30 times more.

Now work the ridge patt from \*\* to \*\*.

**Next row (RS):** k.

**Next row:** k2, p to last 2 sts, k2.

Rep the last 2 rows 30 times more.

Now work the ridge patt from \*\* to \*\*.

C/off all sts pwise. \*

## CENTRE PANEL

Using 10 mm Ns and colour A, c/on 52 sts.

Work exactly as given for the Left Panel from \* to \*.

## RIGHT PANEL

Work exactly as given for Left Panel.

## TO MAKE UP

With the RS facing, place the panels next to one another in the correct order. Using the thinner yarn in matching colour and a tapestry needle, sew the panels together using a ladder stitch. Darn in all the loose ends of yarn at the back of the work.

## PETALS (make 25)

These instructions are for a knitted cord that will form one petal. You need to work 5 petals for each flower motif. Using 9 mm double-pointed Ns or a circular N and colour B, c/on 4 sts.

K 1 row.

**Next row:** without turning the work and with the RS facing, slide the sts to the other end of the N and, pulling the yarn from the left hand side of the sts to the right hand across the back of the work, k1 tbl, k3.

Rep this row, remembering to pull the yarn tightly across the back of work, until the cord measures 45 cm from the beg. C/off.

## FLOWER CENTRES (make 5)

Using 10 mm Ns and colour C, c/on 3 sts.

Work in g st throughout.

K 1 row.



Inc 1 st at each end of row on the next 3 rows [9 sts].  
 Work 5 rows straight on these sts.  
 Dec 1 st at each end of row on the next 3 rows [3 sts].  
 C/off these rem 3 sts.

## TO APPLIQUE

Referring to the photograph, and using five cords for each flower, bend each cord into the shape of a petal, so the ends of the cords don't quite meet in the centre of the flower. Pin the flower to one corner square. Using the thinner yarn in matching colour and the tapestry needle, sew the flower in place, working in small, neat slip stitches. Remove the pins as you work. When completed, appliqué a

flower in the same way on the three remaining corners and finally in the centre square. Darn in all the loose ends of the cords. Place a flower centre on top of the petals of each flower so the ends of the cords are disguised and, using small, neat back stitches, sew in place. Darn in any loose ends securely.



© THE KNITTER'S BIBLE - KNITTED  
 HOMESTYLE, PUBLISHED BY DAVID  
 & CHARLES (R307, RARU.CO.ZA)

---

# COSY STRIPES

*Keep warm and toasty on chilly winter evenings with this hot-water bottle cover knitted in simple stocking stitch*

---

## MEASUREMENTS

About 20 cm wide and 40 cm long

## MATERIALS

**Note:** This cover has been designed in a super-chunky yarn. It's the equivalent of knitting two strands of standard chunky yarn together.

- 1 x 100 g ball of Stylecraft Life Super Chunky in Cream, Shade 2370 (colour A)
- 1 x 100 g ball of Stylecraft Life Super Chunky in Cardinal, Shade 2372 (colour B)
- 1 pair 8 mm knitting needles
- Tapestry needle

## TENSION

11 sts and 16 rows to 10 cm measured over st st using 8 mm Ns.

## FRONT AND BACK (both alike)

Using 8 mm Ns and colour A, c/on 24 sts.

### Work in st st stripe patt as folls:

Work 4 rows in colour A.

Work 2 rows in colour B.

These 6 rows form the stripe patt.

Cont in stripe patt until the work measures about 26 cm from the beg, ending with the 4 rows of colour A.

### Shape top

Dec 1 st at each end of the row on the next and every foll alt row until you have 16 sts rem on the Ns.

Now cont in stripe patt without further shaping until the

work measures about 40 cm from the beg, ending with the 4 rows of colour A.

C/off in colour A.

## CORD

Cut 2 x two-metre lengths of colour B. Tie them together at one end and secure to a door handle, back of chair or other fixed object. Twist the two lengths of yarn together until the cord starts to fold back and twist around itself. Still keeping the cord taut, fold it in half and allow the strands to twist around each other to form one tight cord. Tie a secure knot at each end of the cord to stop it from unravelling, about 5 cm from each end. Cut each end carefully to form neat tassels.

**TIP** You could use a length of ribbon tape in the same colour as the contrast stripe instead of making the cord, if you prefer.

## TO MAKE UP

With the RS of work together, sew the c/on edges together with a back stitch. Turn the work over so the RS of the cover is now outside. Using a ladder stitch, sew the side seams, matching the stripe pattern as you work. Lay the knitting flat, cover with clean, damp cloths and leave until dry.

Slip a hot-water bottle into the neck opening and tie the cord around the cover at the neck of the hot-water bottle to hold it in place. Refer to the ball band for washing and care instructions.

DESIGNED BY STYLECRAFT. FOR YOUR NEAREST STOCKIST OF STYLECRAFT YARNS CONTACT ARTHUR BALES ON 011-888-2401, EMAIL [INFO@ARTHURBALES.CO.ZA](mailto:INFO@ARTHURBALES.CO.ZA) OR GO TO [STYLECRAFT-YARNS.CO.UK](http://STYLECRAFT-YARNS.CO.UK).



---

# CASUAL JACKET

*Perfect to add to your weekend wardrobe, this comfy cardigan with hood can also be worn as a jacket. The raglan shaping and basic stitch pattern make the design suitable for knitters with moderate skills*

---

## MEASUREMENTS

**Note:** This hooded jacket is designed in two sizes only, with a loose fit.

### To fit bust

80-90 (95-105) cm

### Actual bust measurement

105 (121) cm

### Length to back neck

77 (80) cm

### Sleeve seam

46 cm

## MATERIALS

**Note:** The yarn used in the photograph is Ella Rae Classic Heather and is an imported yarn. It's an Aran weight and is made of 100% pure wool with 200 m metreage per 100 g ball. The colour used is Grey, Shade 139. You can use any Aran yarn of your choice. Make sure the yarn you choose has the same amount of metres per ball or you may have to buy more than specified below.

- 9 (11) x 100 g balls of Aran in a colour of your choice
- 1 pair each 4 mm and 4,5 mm knitting needles
- 2 stitch holders
- Coloured marker
- Tapestry needle

## TENSION

20 sts and 24 rows to 10 cm measured over st st using 4,5 mm Ns.

## NOTE

This cardigan has been designed in two sizes. Instructions are given for the smaller size with the larger size in

brackets ( ); where only one set of figures is given it applies to both sizes.

## BACK

Using 4,5 mm Ns, c/on 105 (121) sts.

Starting with a k row, work in st st until work measures 50 cm from the beg, ending with a WS row.

## Shape raglans

C/off 6 sts at the beg of the next 2 rows [93 (109) sts].

**Next row (RS):** [k1, p1] 3 times, k to last 6 sts, [p1, k1] 3 times.

**Next row (WS):** [p1, k1] 3 times, p to last 6 sts, [k1, p1] 3 times.

**Next row (RS):** [k1, p1] 3 times, dec right (see abbreviations on page 82), k to last 9 sts, sl 1, k2tog, pss0, [p1, k1] 3 times [89 (105) sts].

These 3 rows set the raglan shaping.

Cont working as set, dec 2 sts at each end of the row on the foll 6th row [85 (101) sts].

Now dec 2 sts at each end of the row on every foll 4th row 12 (14) times [37 (45) sts].

Work 3 rows straight on these 37 (45) sts, ending with a WS row.

C/off all sts.

## LEFT FRONT

Using 4,5 mm Ns, c/on 52 (60) sts.

Starting with a k row, work in st st until work measures 50 cm from the beg, ending with a WS row.

## Shape raglan

C/off 6 sts at the beg of next row, k to end [46 (54) sts]. P 1 row.

**Next row (RS):** [k1, p1] 3 times, k to end.

**Next row (WS):** p to last 6 sts [k1, p1] 3 times.

**Next row (RS):** [k1, p1] 3 times, dec right (see abbreviations on page 82), k to end [44 (52) sts].

Cont working as set, dec 2 sts at beg of the row on the foll 6th row [42 (50) sts].

Now dec 2 sts at beg of the row on every foll 4th row 8 (10) times [26 (30) sts].

Work 3 rows straight on these 26 (30) sts, ending with a WS row.

## Shape neck

**Next row (RS):** [k1, p1] 3 times, dec right, k7 (11) sts and turn; leave the rem 10 sts on a st holder for centre front





neck [14 (18) sts].

**Next row (WS):** c/off 2 (3) sts, p to last 6 sts, [k1, p1] 3 times [12 (15) sts].

**Next row (RS):** [k1, p1] 3 times, k to end.

**Next row (WS):** c/off 2 (3) sts, p to last 6 sts, [k1, p1] 3 times [10 (12) sts].

**Next row (RS):** [k1, p1] 3 times, dec right, k to end [8 (10) sts].

**1st size only:**

**Next row (WS):** c/off 2 sts, [p1, k1] twice, p1 [6 sts].

**2nd size only:**

**Next row (WS):** c/off 2 sts, p1, [k1, p1] 3 times [8 sts].

**Next row (RS):** [k1, p1] 3 times, k2.

**Next row (WS):** c/off 2 sts, [p1, k1] twice, p1 [6 sts].

**Both sizes:**

**Next row (RS):** [k1, p1] 3 times.

**Next row (WS):** c/off 2 sts, p1, k1, p1, [4 sts].

**Next row (RS):** [k1, p1] twice.

**Next row (WS):** [k1, p1] twice.

C/off these 4 sts.

## RIGHT FRONT

Work exactly as given for Left Front, until work measures 50 cm from the beg, ending with a RS row.

### Shape raglan

**Next row (WS):** c/off 6 sts, p to end [46 (54) sts].

**Next row (RS):** k to last 6 sts, [p1, k1] 3 times.

**Next row (WS):** [p1, k1] 3 times, p to end.

**Next row (RS):** k to last 9 sts, sl 1, k2tog, pssso, [P1, k1] 3 times [44 (52) sts].

Cont working as set, dec 2 sts on the foll 6th row once, then on every foll 4th row 8 (10) times [26 (30) sts].

Work 2 rows on these 26 (30) sts.

### Shape neck

**Next row (WS):** [p1, k1] 3 times, p10 (14) sts, turn; leave rem 10 sts on a st holder for centre front neck [14 (18) sts].

**Next row (RS):** c/off 2 (3) sts, k to last 9 sts, sl 1, k2tog, pssso, [p1, k1] 3 times [12 (15) sts].

**Next row (WS):** [p1, k1] 3 times, p to end.

**Next row (RS):** c/off 2 (3) sts, k to last 6 sts, [p1, k1] 3 times [10 (12) sts].

**Next row (WS):** [p1, k1] 3 times, p to end.

**Next row (RS):** k1, sl 1, k2tog, pssso, k0 (2), [p1, k1] 3 times [8 (10) sts].

**Next row (WS):** [p1, k1] 3 times, p to end.

**1st size only:**

**Next row (RS):** c/off 2 sts, [k1, p1] twice, k1 [6 sts].

**2nd size only:**

**Next row (RS):** c/off 2 sts, k1, [p1, k1] 3 times [8 sts].

**Next row (WS):** [p1, k1] 3 times, p2.

**Next row (RS):** c/off 2 sts, [k1, p1] twice, k1 [6 sts].

**Both sizes:**

**Next row (WS):** [p1, k1] 3 times.

**Next row (RS):** c/off 2 sts, k1, p1, k1 [4 sts].

**Next row (WS):** [p1, k1] twice.

**Next row (RS):** [p1, k1] twice.

C/off these 4 sts.

## SLEEVES (both alike)

Using 4,5 mm Ns, c/on 61 (65) sts.

Starting with a k row, work in st st, at the same time inc as folls:

Inc 1 st at each end of the 5th row [63 (67) sts].

Now inc 1 st at each end of every foll 16th (12th) row until you have 75 (83) sts on the Ns [you should have worked 101 rows].

Cont working straight on these 75 (83) sts until work measures 46 cm from the beg, ending with a WS row.

### Shape raglan

C/off 6 sts at the beg of the next 2 rows [63 (71) sts].

**Next row (RS):** [k1, p1] 3 times, k to last 6 sts, [p1, k1] 3 times.

**Next row (WS):** [p1, k1] 3 times, p to last 6 sts, [k1, p1] 3 times.

**Next row (RS):** [k1, p1] 3 times, dec right (see abbreviations on page 82), k to last 9 sts, sl 1, k2tog, pssso, [p1, k1] 3 times [59 (67) sts].

These 3 rows set the raglan shaping.

Cont working as set, dec 2 sts at each end of row on the foll 6th row [55 (63) sts].

Now dec 2 sts at each end of the row on every foll 4th row 10 (12) times [15 sts].

### Left sleeve only

Work 2 rows, ending with a RS row.

**Next row (WS):** c/off 2 sts, k1, p1, k1, p to last 6 sts [k1, p1] 3 times [13 sts].

**Next row (RS):** [k1, p1] 3 times, dec right, [k1, p1] twice, k1 [11 sts].

**Next row (WS):** c/off 2 sts, k1, p to last 6 sts, [k1, p1] 3 times [9 sts].

**Next row (RS):** [k1, p1] 3 times, k1, p1, k1.

**Next row (WS):** c/off 2 sts, [k1, p1] 3 times [7 sts].

**Next row (RS):** [k1, p1] 3 times, k1.



**Next row (WS):** c/off 2 sts, [k1, p1] twice [5 sts].

**Next row (RS):** [k1, p1] twice, k1.

**Next row (WS):** c/off 2 sts, k1, p1 [3 sts].

**Next row (RS):** k1, p1, k1.

C/off these 3 sts.

### Right sleeve only

Work 1 row, ending with a WS row.

**Next row (RS):** c/off 2 sts, p1, k1, p1, k to last 6 sts, [p1, k1] 3 times [13 sts].

**Next row (WS):** [p1, k1] 3 times, p to last 4 sts, [k1, p1] twice.

**Next row (RS):** c/off 2 sts, p1, sl1, k2tog, pssso, [p1, k1] 3 times [9 sts].

**Next row (WS):** [p1, k1] 4 times, p1.

**Next row (RS):** c/off 2 sts, [p1, k1] 3 times [7 sts].

**Next row (WS):** [p1, k1] 3 times, p1.

**Next row (RS):** c/off 2 sts, [p1, k1] twice [5 sts].

**Next row (WS):** [p1, k1] twice, p1.

**Next row (RS):** c/off 2 sts, p1, k1 [3 sts].

**Next row (WS):** p1, k1, p1.

C/off these 3 sts.

### HOOD

Using 4,5 mm Ns, c/on 150 sts.

Starting with a k row, work in st st until work measures 12 cm from the beg, ending with a WS row.

**Next row (RS):** k2tog, k to last 2 sts, k2tog [148 sts].

P1 row.

Rep last 2 rows 4 times more, then rep dec row once more [138 sts].

Work 3 rows straight on these 138 sts.

**Next row (RS):** k2tog, k to last 2 sts, k2tog [136 sts].

Rep the last 4 rows 5 times more [126 sts].

P1 row.

Place a coloured marker in the centre of the last row.

### Shape back of hood

**Next row (RS):** k to within 2 sts of coloured marker, k2tog, sl1 k1, pssso, k to end [124 sts].

P1 row.

Rep last 2 rows twice more [120 sts].

**Next row (RS):** k to within 2 sts of coloured marker, k2tog, sl1, k1, pssso, k to end [118 sts].

**Next row (WS):** p to within 2 sts of coloured marker, p2tog tbl, p2tog, p to end [116 sts].

Rep the last 2 rows 8 times more [84 sts]. C/off.



### POCKETS (make two)

Using 4,5 mm Ns, c/on 36 sts.

Starting with a k row, work in st st for 15 cm, ending with a WS row.

C/off.

### TO MAKE UP

Darn in all loose ends. Using a ladder stitch, sew raglan sleeve seams to back and fronts. Sew sleeve seams. Sew side seams. Fold hood in half along the c/off edge and join the seam, this will be the centre back seam. Now attach the hood in place using a slipstitch, starting and ending at the centre front edges. Sew the pockets in position on each front, placing them about 25 cm above the c/on edge and 6 cm in from the side seam.

### FRONT BAND

Using 4 mm Ns c/on 11 sts.

**Next row (RS):** k1, \*p1, k1; rep from \* to end.

**Next row (WS):** p1, \*k1, p1; rep from \* to end.

These 2 rows form the rib patt.

Cont working in rib until the band fits when slightly stretched up Right Front edge, from the c/on edge to neck shaping, around the front edge of Hood and down the Left Front to c/on edge.

**Note:** It's a good idea to sew the band in place as you work. C/off all sts ribwise.

Darn in any rem ends of yarn.

FROM KNITTING AT HOME, BY LEANNE PROUSE. DESIGN AND PATTERN INSTRUCTIONS © BY LEANNE PROUSE; PHOTOGRAPHY BY ACORN PHOTO © BY SIXTH&SPRING BOOKS. USED BY PERMISSION. (R592, RARU.CO.ZA)

---

# CLASSIC & WARM

*This casual men's sweater is ideal for lounging around over weekends. The simple stitch pattern adds texture to a basic design and is easy to master*

---

## MEASUREMENTS

### To fit chest

89-94 (99-104; 109-114; 119-124; 129-134; 139-144) cm

### Actual chest measurement

98 (108;118;129;140;150) cm

### Length to back neck

66 (68;69;70;72;73) cm

### Sleeve length

46 (46;47;47;48;48) cm

## MATERIALS

**Note:** the sweater is designed in a standard Aran yarn.

- 6 (6;7;7;7;8) x 100 g balls of Stylecraft Life Aran in Grey, Shade 2419
- 1 pair each 4 mm and 5 mm knitting needles
- 2 stitch holders
- Coloured markers
- Tapestry needle

## TENSION

19 sts and 28 rows to 10 cm measured over textured patt using 5 mm Ns.

## NOTE

Instructions are given for the smallest size with the larger sizes in brackets ( ); where only one set of figures is given it applies to all sizes.

## BEFORE YOU BEGIN

There are six sizes in this pattern; it's a good idea to circle the size you wish to make to avoid any confusion.

## FRONT

Using 4 mm Ns, c/on 87 (97;107;117;127;137) sts.

**1st row (RS):** k2, \*p1, k1; rep from \* to last st, k1.

**2nd row:** k1, \*p1, k1; rep from \* to end.

These 2 rows form the rib patt.

Rep these 2 rib rows for 6 cm, ending with a RS row.

**Inc row:** rib 9, M1, [rib 14 (16;18;20;22;24), M1] 5 times, rib to end [93 (103;113;123;133;143) sts].

Change to 5 mm Ns and work in textured patt as folls:

**1st row (RS):** k.

**2nd row:** p.

**3rd row:** p5, \*k3, p7; rep from \* to last 8 sts, k3, p5.

**4th row:** p.

**5th row:** k.

**6th row:** p3, \*k7, p3; rep from \* to end.

These 6 rows form the patt.

Cont in patt until work measures 42 cm from the beg, ending with a WS row.

Place a coloured marker at the centre of the last row.

## Shape armholes

C/off 5 (7;8;10;12;13) sts at beg of next 2 rows [83 (89;97; 103;109;117) sts].

Dec 1 st at each end of the row on the next 3 (5;5;7;7;9) rows [77 (79;87;89;95;99) sts].

Dec 1 st at each end of every foll alt row until there are 71 (75;81;85;91;95) sts on the Ns.

Cont straight in patt on these 71 (75;81;85;91;95) sts until work measures 15 (15;17;18;18;19) cm from the coloured marker, ending with a WS row.

## Shape neck

**Next row:** patt 27 (28;30;32;34;35) sts, turn and leave the rem 44 (47;51;53;57;60) sts on a spare N.

Work on the first set of sts only.

Dec 1 st at neck edge on the next 5 rows [22 (23;25; 27;29;30) sts].

Cont straight in patt on these 22 (23;25;27;29;30) sts until work measures 21 (23;24;25;27;28) cm from the coloured marker, ending with a WS row.

## Shape shoulder

C/off 5 (6;6;7;7;7) sts at beg of next row and foll 2 alt rows [7 (5;7;6;8;9) sts].

Patt 1 row.

C/off these rem 7 (5;7;6;8;9) sts.

## Shape other side of neck

With the RS facing, sl the next 17 (19;21;21;23;25) sts onto a st holder for the centre front neck, rejoin yarn to rem 27 (28;30;32;34;35) sts and patt to end.



Dec 1 st at neck edge on the next 5 rows [22 (23;25; 27;29;30) sts].  
Cont straight in patt on these 22 (23;25;27;29;30) sts without shaping until work measures 21 (23;24; 25;27;28) cm from the coloured marker, ending with a RS row.

### Shape shoulder

C/off 5 (6;6;7;7;7) sts at beg of next row and foll 2 alt rows [7 (5;7;6;8;9) sts].

Patt 1 row.

C/off these rem 7 (5;7;6;8;9) sts.

## BACK

Work exactly as given for Front, omitting the neck shaping, until work measures the same as Front to beg of shoulder shaping, ending with a WS row.

### Shape shoulders

C/off 5 (6;6;7;7;7) sts at beg of next 6 rows [41 (39;45; 43;49;53) sts].

C/off 7 (5;7;6;8;9) sts at beg of next 2 rows [27 (29;31; 31;33;35) sts].

Sl the rem 27 (29;31;31;33;35) sts onto a st holder for centre back neck.

## SLEEVES (both alike)

Using 4 mm Ns, c/on 35 (37;37;39;41;43) sts.

Work 6 cm in rib as given for Front, ending with a RS row.

**Inc row:** rib 4 (5;5;5;4;5) M1, [rib 9 (9;9;10;11;11), M1] 3 times, rib to end [39 (41;41;43;45;47) sts].

Change to 5 mm Ns and work in patt as follows:

**1st row:** k.

**2nd row:** p.

**3rd row:** p3 (4;4;5;6;7), \*k3, p7; rep from \* to last 6 (7;7; 8;9;10) sts, k3, p3 (4;4;5;6;7).

**4th row:** p.

These 4 rows set the patt.

Now cont in patt as set, and at the same time inc 1 st at each end of the row on the next and every foll 4th row until you have 47 (61;69;77;81;95) sts on the Ns. Work all the extra sts into patt.

Now inc 1 st at each end of the row on every foll 6th row until you have 75 (81;85;89;93;99) sts on the Ns.

Cont in patt on these 75 (81;85;89;93;99) sts without shaping until sleeve measures 46 (46;47;47;48;48) cm from the beg, ending with a WS row.

### Shape sleeve top

C/off 5 (7;8;10;12;13) sts at beg of next 2 rows [65 (67;69; 69;69;73) sts].

Patt 2 (4;4;4;6;6) rows on these sts without further shaping.

Dec 1 st at each end of the row on the next and every foll 4th row until you have 61 (61;63;63;61;63) sts on the Ns.

Dec 1 st at each end of the row on the next row and then on every foll alt row until you have 37 (39;39;39;39;43) sts on the Ns.

Now dec 1 st at each end of every row until you have 27 (29;29;29;29;33) sts on the Ns.

C/off these 27 (29;29;29;29;33) sts.

Place a coloured marker on the centre stitch of the c/off row.

## NECKBAND

Using a back stitch, join the right shoulder seam. With the RS facing and using 4 mm Ns, pick up and k 19 (21;21; 21;23;23) sts evenly down the left front neck, k across the 17 (19;21;21;23;25) sts held on st holder for centre front neck, pick up and k 20 (22;22;22;24;24) sts evenly up the right front neck, then k across the 27 (29;31;31;33;35) sts held on st holder for centre back neck [83 (91;95; 95;103;107) sts].

Starting with a 2nd row of rib patt, work 7 rows in rib patt as given for the Front.

C/off all sts ribwise.

## TO MAKE UP

Using a back stitch, join left shoulder seam and neckband. Fold sleeves in half lengthways at the coloured marker in the c/off row, place the centre of sleeve top into centre of the shoulder seam, now sew the sleeves into the armholes, making sure the c/off sts at armholes on the sleeves match the c/off sts at armholes on the front and back.

**Note:** you may want to tack the sleeve head in position first before you sew the actual seam for a perfect fit.

Using a ladder stitch, join side and sleeve seams. Pin out the sweater to the given measurements. Cover with a clean damp towel and leave until dry. Do not press as you will flatten the stitch and spoil the texture.

DESIGNED BY STYLECRAFT. FOR YOUR NEAREST STOCKIST FOR STYLECRAFT YARNS CONTACT ARTHUR BALES ON 011-888-2401, EMAIL INFO@ARTHURBALES.CO.ZA OR GO TO STYLECRAFT-YARNS.CO.UK.

# HOW TO MAKE POMPOMS

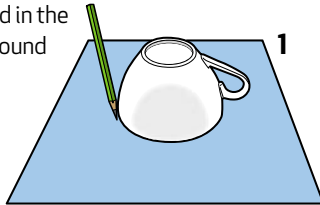
*Attach them to beanies, the ends of cords or knitted toys – they're so easy you can get older kids to help*

## WHAT YOU NEED

- Cardboard for the template
- A cup, bowl or glass for drawing the outer edge of the template (about 9 cm in diameter)
- The cap of a glue stick or similar size lid for the hole in the template
- Pencil
- Scissors
- Knitting yarn oddments in one or several colours
- A needle with a large eye, such as a tapestry needle

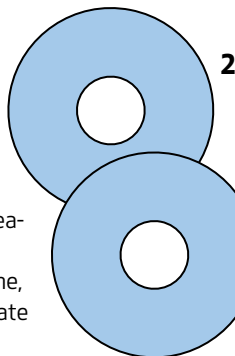
## STEP 1

Place the cardboard on a flat work surface. Place the cup, bowl or glass upside down on the cardboard and use the pencil to draw an outline around it. Cut out the circle. Place the glue stick cap or small lid in the centre of the circle, draw around the edge and cut along the line. The cardboard circle is now a ring with a hole in the centre.



## STEP 2

Make a second identical cardboard ring. Place the two rings together to make the pompom template.



## STEP 3

Use one colour yarn or several colours. Cut the wool to manageable lengths of a few metres. Working with one length at a time, wind the yarn around the template – see illustrations. Keeping one end of the yarn outside the ring,

feed the other end through the opening in the centre, around the ring and to the front. Repeat, feeding the yarn through the hole until the ring is covered and the opening has been filled. Use the tapestry needle to get the yarn through when it becomes difficult to do so by hand. The more times the yarn is wrapped around the ring, the fuller and firmer the pompom will be.

## STEP 4

Insert the tip of the scissors between the two cardboard rings and snip the yarn, a few strands at a time until all strands have been cut.

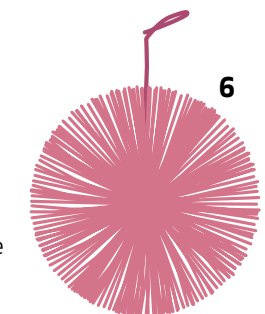
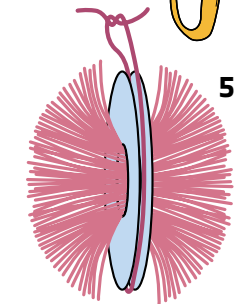
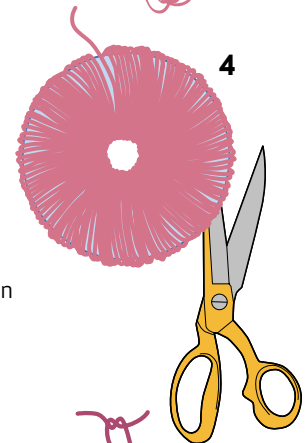
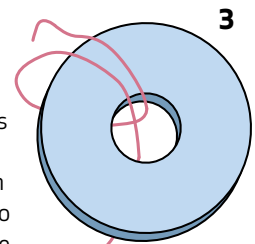
## STEP 5

Insert a length of yarn between the cardboard rings, firmly wind it around once or twice and knot tightly.

## STEP 6

Carefully remove the cardboard rings and fluff up the pompom. Trim off excess and uneven yarn, except the ends of the tie (needed to hang up the pompom or attach it to a garment or toy).

**NOTE** Use a small circle such as a cookie cutter to create smaller pompoms (such as the pompoms needed for the felted boots on page 32). Or wind the yarn around the prongs of a fork. Tie a small piece of yarn between the middle two prongs and cut the edges on the outer prongs to make the pompoms.

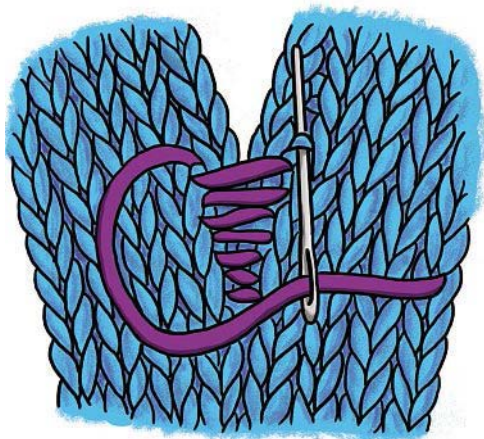




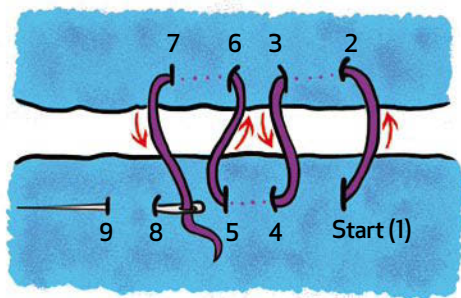
# FINISHING TOUCHES

Follow the directions below for two ways to join knitted pieces and how to block items when called for in the pattern to ensure the best look, size and shape for your finished garment

## LADDER (MATTRESS) STITCH



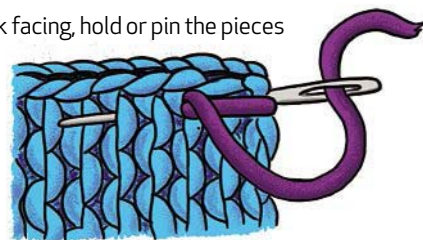
This is used for joining side and sleeve seams and gives a seamless look when finished. Stitch with the right sides facing up. Use a tapestry needle and matching yarn to weave through the centres of the stitches at the edges and pull the pieces together. See the diagram below for a stitch guide.



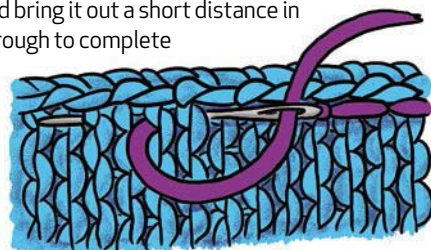
## BACK STITCH

This is a sturdier stitch often used for joining shoulder seams. It's also used in embroidery.

1 With right sides of work facing, hold or pin the pieces in place. Fasten the thread and secure the end of the seam by taking the needle twice around the edges from front to back.



2 Insert the needle where the yarn emerges from the previous stitch and bring it out a short distance in front. Pull the yarn through to complete the stitch. Repeat to end. The stitches will lie next to each other in the front and overlap at the back.



## BLOCKING

Blocking helps you to ensure your knitting is the correct size and shape. The easiest way to block items is to place a damp clean towel on a flat surface and place the pieces on the towel one at a time, smoothing them to shape and rolling up the towel as you go. Leave for a few hours or overnight, unroll and place the pieces on a flat surface. Ease them to the size the pattern calls for then let them dry completely. This method is suitable for any fibre that can be dampened without damage. Make sure you check the care instructions on the ball band before blocking.

---

# ABBREVIATIONS

---

**alt** – alternate

**beg** – begin(ning)

**c/on(off)** – cast on (off)

**C4B** – cable 4 back: slip the next 2 sts onto a CN and hold at back of work, k2, then k2 from CN

**C4F** – cable 4 front: slip the next 2 sts onto a CN and hold at front of work, k2, then k2 from CN

**C6B** – cable 6 back: slip the next 3 sts onto a CN and hold at back of work, k3, then k3 from CN

**C6F** – cable 6 front: slip the next 3 sts onto a CN and hold at front of work, k3, then k3 from CN

**CN** – cable needle

**cont** – continue

**dec** – decrease(ing)

**dec right** – sl 1, k1, pss0, sl this st back onto left-hand N, now bring the second st on left-hand N over the first st, sl the st back on right-hand N [this decreases 2 sts]

**fol(s)** – follow(s)(ing)

**gst** – garter stitch: knit all rows

**inc(s)** – increase(s)(ing)

**k** – knit

**kfb** – knit in front and back of stitch [this adds 1 stitch]

**kwise** – knitwise

**M1** – make 1: pick up the horizontal loop lying between the stitch just worked on right-hand N and the next st on left-hand N, k into the back of the loop [this adds 1 stitch]

**N(s)** – needle(s)

**p** – purl

**patt** – pattern

**pss0** – pass slipped st over

**pwise** – purlwise

**rem** – remain(ing)

**rep** – repeat

**rnd(s)** – round(s)

**RS(F)(R)** – right side (facing)(row)

**SK2PO** – slip 1, knit 2tog, pass slipped stitch over

**SKPO** – slip 1, knit 1, pass slipped stitch over

**sl** – slip

**sl1pw** – slip 1 purlwise

**ssk** – slip slip knit: slip 2 stitches onto the right-hand needle kwise, insert the left-hand needle through the front of the loops of the slipped stitches (without removing them from the needles), then knit them together tbl [this dec 1, with a left-slanting stitch]

**st st** – stocking stitch: knit 1 row, purl 1 row

**st(s)** – stitch(es)

**tbl** – through back of loop

**tog** – together

**WS(F)(R)** – wrong side (facing)(row)

**yb** – yarn backward

**yfwd** – yarn forward

**yon** – yarn over needle

**yrn** – yarn round needle

## CROCHET ABBREVIATIONS

**ch** – chain

**dc** – double crochet

**lp(s)** – loop(s)

**rnd** – round

**sl st** – slip stitch

## SEWING STITCHES

■ **Back stitch** – see page 81.

■ **Chain stitch** – see page 23.

■ **French knot** – see page 28.

■ **Ladder (mattress) stitch** – see page 81.

■ **Satin stitch** – a series of flat stitches worked closely together to completely fill an embroidered area and create blocks of colour.

■ **Slip stitch** – small stitches used for hems or to join two pieces on the right side when appliquéing or closing a gap in a seam through which you've stuffed a toy or cushion. The smaller the stitches, the less visible the join. **1.** Secure the thread inside the hem, toy, cushion or item being appliquéd. **2.** Using your sewing needle, pick up just a thread or two on the opposite side. **3.** Take the needle straight back towards the first side and pick up a thread or two there. Pull the needle through. **4.** Now pick up a thread on the opposite side again, a little distance from the previous stitch, and bring the needle back as before. **5.** Repeat to the end and secure.

# CROSSWORD FUN!

Love a good puzzle? You have to get your hands on the latest issue of this top-selling crossword magazine

**NOW  
ON SALE**

The 14th issue of YOU Blockbusters is packed with crosswords, colossus crosswords, photo blockbusters, codebreakers, sudoku-x-words and more. It also includes solutions. Be sure to get your copy today!

# YOU <sup>2017</sup> WINTER **Nº14** BLOCKBUSTERS

■ CROSSWORDS ■ CODEBREAKERS ■ SUDOKU-X-WORDS  
■ ANAGRAMS ■ CRYPTIC CROSSWORDS ■ PHOTO BLOCKBUSTERS

**ONLY  
R40  
FOR 95  
GREAT BRAIN  
GAMES**

## HOW TO ORDER



### DIGITAL

Order a digital version at [mysubs.co.za](http://mysubs.co.za)



### CALL

021-406-4962



### EMAIL

[shop@you.co.za](mailto:shop@you.co.za)



### GO TO

[youstore.co.za](http://youstore.co.za)

**SOUTH AFRICA R40 (VAT INCLUDED)  
NAMIBIA N\$42.50**

37007  
9 780987 001467

Clues from the crossword grid:  
 Grease - The woman  
 Child's toy - Warm up again  
 Exposes to sunlight - Frail  
 Whimpy - Reacts with hot vapour  
 Female relative - Edicts (British)  
 Madagascan primate (3-3)  
 Thick, rough fabric - List entry  
 City in NE Ohio - City snow  
 Shifting suddenly (colloq)  
 Election (symbol)  
 Cognate - Concert venues  
 Dead - Pigeon hawks  
 Close by - Ireland  
 Vehicle part - Night of Man Planet

# IT'S SIMPLY IRRESISTIBLE



Satisfy those cravings and treat your family and friends to utterly delectable dishes from YOU Indulge. We've carefully selected the most decadent recipes from you.co.za for your convenience – from comfort food to gourmet delights. Go on . . . you know you want to . . .



## TOP 5

- Lasagnes
- Potjies
- Cheesecakes
- Milk tarts

### HOW TO ORDER



#### DIGITAL

Order digitally at [mysubs.co.za](http://mysubs.co.za)



#### CALL

021-406-4962



#### EMAIL

[shop@you.co.za](mailto:shop@you.co.za) with the name of the title you're looking for in the subject line



#### GO TO

[youstore.co.za](http://youstore.co.za) and order your copy online

# YOU

152 online  
favourites

# INDULGE



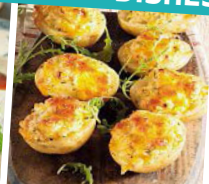
Caramel  
milk tart!  
#yum

**TREAT YOURSELF!**  
Insanely decadent  
recipes from  
[you.co.za](http://you.co.za)

SOUTH AFRICA R47  
(VAT included)  
NAMIBIA N\$49,50



MAINS / SIDE DISHES / BRAAI / SWEETS



Recipes so good you can't help but #indulge